



the JOURNEY

Spring Edition 2025 | Vol. 12, No. 1

Annual
Report
Issue

A Publication
of LifeScape

Journey of Hope Phase 2: Therapy Pool, Gym, & Safe Access Added to Children's Campus



Board member Rick Kiley helped student Dominic DeRouchey shovel dirt at the groundbreaking on April 12, 2024.

The new children's campus in northwest Sioux Falls will be completed in the fall of 2026.

With a joyful groundbreaking celebration last April, LifeScape launched Phase 1 of the Journey of Hope project for a new children's campus in Sioux Falls. Walls now enclose the pediatric rehabilitation specialty hospital, the specialty school, and the administration areas. Steel supports are going up on the residential area. We are so grateful for the many donors who have helped make the new children's campus a reality! We have \$102 million committed to the project and are now finalizing Phase 2 plans.

The vision for Phase 2 includes a gym, pool, therapy pool, enclosed courtyard, clinic room and a student-run convenience store. The cost is estimated at \$12 million. We have a good start on funding for Phase 2 but have \$5 million left to raise. That last \$5 million will make a significant difference in the opportunities of care possible on the new campus.

The last \$5 million would provide a separate corridor for children in the hospital to access the pool and gym areas, apart from children being supported in the behavioral therapy areas. Great care is taken that these two groups of children are not in the same spaces together to ensure safety.

Phase 2 would include the only pediatric therapy pool in the region. Although some therapy occurs in the recreation pool, the smaller therapy pool is specially designed to manipulate buoyancy, hydrostatic pressure, resistance, temperature, and turbulence, based on the condition and therapy needs of the child. LifeScape's aquatic therapy program is led by the state's only Pediatric Aquaticist, who is also an occupational therapist and board-certified behavior analyst.

Already funded is a magnificent new school playground. This is thanks to the generosity of Harold & Helen Boer, Chip Carlson with Henry Carlson Companies, and a successful \$2.1 million Sioux Falls Chamber Community Appeals drive last summer. Under an expanded Phase 2, an enclosed play area would be added, with room for wheelchair swings, a quiet sitting area for children, and a tranquil courtyard space for staff on break. The last \$5 million would also create an indoor playground area at one end of the gym for children to play safely and comfortably in cold or rainy weather.

A small convenience store would provide a real-world environment for kids to use the job skills they are learning in the vocational lab at school. The store would be open to staff to purchase snacks and other small purchases.

The last \$5 million will provide a telemedicine clinic room. Virtual care visits will decrease the travel time for clinic visits and provide quicker responses to acute medical concerns.

We are close to completing a facility that will stand to serve the children of South Dakota and the region for the next 70 years. The LifeScape Children's Campus is more than a building. Children for generations to come will learn, grow and heal within the walls going up today. But we are not done yet. The children still need all of us to join the Journey of Hope in raising the last \$5 million to complete Phase 2. Your help today will make LifeScape's new children's campus a beautiful place for children to truly heal, learn, and grow. **Join us at LifeScapeJourneyOfHope.org, or call the LifeScape Foundation at 605-444-9800.**



Electronic Service Requested

NONPROFIT ORG
U.S. POSTAGE
PAID
PERMIT NO. 356
SIOUX FALLS, SD

From Our Chief Executive Officer



Steve Watkins
Chief Executive Officer

Tech Innovation Boosts Care

CEO Steve Watkins invited LifeScape Board Member Josh Pauli to give an update on technology projects at LifeScape.

In summer 2024, my phone rang with the familiar name “Steve Watkins” as the caller. Steve and I have grown close since I started on the LifeScape Governing Board in January 2019, so I was delighted to chat. After sharing my 115-degree Arizona golf stories and hearing about his lake and fishing adventures, he asked if I’d be interested in chairing an Ad-hoc Technology Committee for LifeScape. In my mind (and likely yours), I thought there won’t be much work for that committee. After all, our mission is to care for our kiddos (Steve’s endearing term) and adults. Boy, was I wrong!

In the last six months, the leadership of LifeScape has joined Erica DeBoer and I to “get our arms around” current and future technology solutions we are using across the organization and to establish a true technology strategy. I don’t have space to share all of them with you here, but I do want to introduce just a few initiatives that highlight how technology makes a difference at LifeScape.

Durable Technology: Our staff is constantly on the move yet needs to stay connected to a myriad of programs. We’re working with vendors to find the best tablets that are robust enough to hold up day-to-day, while also minimizing the potential for that device to cause injury given its weight and bulkiness during a behavior episode. This is no easy task, yet it’s critical for us to get right.

New Building Design: As the excitement builds for the new Children’s Campus, we are deep into technological decisions that will cascade throughout the organization. Not only are we preparing the new building to have cutting-edge technology, but we’re using this as an opportunity to account for all our facilities while being sensitive to ever-present budget constraints. Another challenge that we’re up for!

Dakota State University Partnership: This one is personal to me as I was the VP for Research at DSU when LifeScape and DSU first worked together on the “Go Baby Go” initiative, and our relationship with DSU continues to expand. We’re in the nascent stages of wearable technology that will better protect our staff, adults, and kids during behavioral episodes that have the potential for injury.

This work not only increases productivity, security, and safety while reducing costs, but most importantly, it improves care for those we are entrusted with every day.

Dr. Josh Pauli
*Governing Board Secretary
Ad-hoc Technology Committee Chair*

Community Partner:



Providing Better Mental Health Outcomes For Children

With a \$250,000 gift to the LifeScape Journey of Hope campaign for the new Children’s Services facility, the Wellmark Foundation is beginning an exciting new partnership with LifeScape.

The Wellmark Foundation gift will provide a dedicated testing and assessment room for conducting functional behavioral assessments (FBAs) and functional analyses (FAs). The testing and analysis are used to identify the causes and underlying factors of challenging behaviors. The program will benefit youth with autism spectrum disorders, mental health diagnoses, and other behavioral needs. It will serve youth in all areas of LifeScape, from outpatient and outreach services to school settings and residential care.

“The Wellmark Foundation strategically deploys resources to support initiatives that meaningfully and measurably improve the health of all South Dakotans,” shared Laura Jackson, executive vice president for Wellmark and chair of The Wellmark Foundation Board. “We were inspired to support LifeScape as they align with our holistic approach to improve youth health outcomes, recognizing that early intervention and comprehensive care can prevent more serious conditions and higher health care costs later.”

This high-value support provides peace of mind for families of children with complex medical conditions and ultimately keeps working parents engaged in the workforce.

Nine-year-old Rose Bakeberg gets a fitting for her ankle-foot orthoses with Certified Orthotist Brad Bracewell at RISE Custom Solutions in Rapid City. RISE is the durable medical subsidiary of LifeScape, located at outpatient clinics in both Sioux Falls and Rapid City.

The Wellmark Foundation believes that healthy people and healthy economies are inextricably linked. We are excited for their collaboration in improving care and outcomes for the children of South Dakota and beyond.



The Wellmark Foundation’s gift will provide a dedicated room for behavioral testing and assessment at the new LifeScape Children’s Services location.



Gifts of Land Sought for New Adult Homes

In 2020, LifeScape launched a “five new houses in five years” plan to upgrade housing for the adults we support. The fifth house in that project, Washington Home, will open in April, with eight adults relocating to a brand-new, beautiful home in northeast Sioux Falls. This project has been possible through a funding partnership with the South Dakota Housing Development Authority.

With the help of the SDHDA, we can extend the project and add two more new adult homes, but we need help to make it happen. Because of increased construction costs and the customization needed for our residents, we are left with over \$400,000 in owner equity costs.

To make it work, the LifeScape Foundation is seeking tax-deductible gifts of land to help meet the financial criteria of the grant formula. The lot would need to be within the Sioux Falls city limits and at least 15,000 square feet to accommodate the duplex design, created by Koch Hazard Architects.

LifeScape has 322 adults living in 39 residential locations in the Sioux Falls area. The residents moving into the new, one-floor accessible homes have previously been supported in other LifeScape housing, mostly rentals. Owning the houses allows us to maintain and manage them more efficiently.

If you are interested in this unique opportunity, we could turn your \$80,000 investment of land into a \$1.7 million home for eight individuals! For details or a tour of Washington Home before residents move in, contact LifeScape Foundation President Jessica Wells at 605-444-9800 or jessica.wells@LifeScapeSD.org



Washington Home, the fifth in LifeScape’s adult housing upgrade project, opens in April.

Final Gift Boosts 31st Annual MallWalk Total to \$100,000!

At the end of the 31st annual MallWalk on February 1st, five kids held up individual placards announcing the amazing fundraising total of \$98,723. That’s when LifeScape Board of Directors Chair Bob McNaney announced that a final gift had boosted the total to \$100,000! Since then, it as grown to over \$102,000!

The beloved event at the Empire Mall drew 48 teams and hundreds of participants to raise funds for the Needs & Dreams Wish List at LifeScape. The dollars raised ensure that expenses with no other source of funding can be met.

The top individual fundraiser was longtime MallWalk champion Jeff Horstmeyer, who raised \$5,995.53. Smiley Goats, the team led by Jeff and his wife, Erin Horstmeyer, raised \$9,010.87, earning the number one fundraising team honor. Smiley Goats was in its 20th year of raising funds for MallWalk in memory of their son, Sammy, who was served by LifeScape. The team has consistently been the top fundraiser for MallWalk for many years.

The second-place fundraising team was Team Rogan, led by Brad and Ashley Schmidt of Brookings. Named in honor of their three-year-old son, Team Rogan raised \$5,531.02. It was their second year of having a team and raising awareness for Smith–Lemli–Opitz syndrome (SLOS). Rogan visits LifeScape Rehabilitation Center in Sioux Falls each week for therapies, which the Schmidts say have helped immensely in his development.



Gifts since MallWalk have raised the fundraising total to \$102,128.14!



Brad and Ashley Schmidt of Brookings shared their LifeScape story at MallWalk. Team Rogan, in honor of their son, raised \$5,531.02 for the Needs & Dreams Wish List!

MallWalk’s corporate sponsor was First PREMIER Bank/ PREMIER Bankcard, which has backed the event for fourteen years. Their MallWalk team, the PREMIER Walkers, came in third for top fundraising team. Team Captain Sandy Schoenbeck is a member of the LifeScape Foundation Board of Directors.

“The MallWalk is an annual favorite because it is an opportunity to connect people with each other and with the mission of LifeScape,” said LifeScape Foundation President Jessica Wells. “The proceeds from the event make an immediate, meaningful impact on people’s lives. We are grateful for the generosity of the donors, sponsors, teams, walkers, and volunteers who make this event such an outstanding success!”

**MallWalk 2026 is on February 7th—
THANK YOU and we will see you then!**

From Our Foundation President



Jessica Wells
LifeScape Foundation President

In this issue of The Journey, we’re showcasing some of the areas we’re most proud of in serving LifeScape’s mission. We’re also telling you of some of our highest needs. We’ve got new construction in children’s and adult services, investments in cutting-edge technology, partnerships to advance autism services, and so much more.

Our fifth newly constructed home will welcome eight adults in April. These homes are possible through significant support from South Dakota Housing Authority, LifeScape Operations for the owner-equity portion of the project, and donors who help purchase the land. While you hear a lot about the new children’s campus, we have quietly worked with supporters over the last five years to ensure adults supported by LifeScape have comfortable and safe housing options.

This winter, we upgraded Adult Day Services on Western Avenue with new flooring throughout and a much-needed renovation of the restrooms. People we support and staff who use the space were involved in the remodeling process, and the results look amazing!

Board member Josh Pauli shares some of the innovative uses of technology within our school and residential areas to keep staff safe and enhance care across LifeScape. We’re implementing technology in adult residential homes to provide added safety and support for individuals and staff. And therapists are implementing new virtual reality systems to engage pediatric patients in our outpatient and inpatient therapy areas.

Our partnership with the University of South Dakota is producing board certified behavior analysts to treat children with autism. Dakota State University and South Dakota State University are devising solutions in protective equipment to keep staff and patients safe. And The WellMark Foundation is helping address waitlists for autism testing and treatment. Collaboration with industry experts, higher education, and donors provide the most significant advances.

Our 2024 revenues and expenses show a strong fundraising year, and you may notice that we didn’t distribute as much to LifeScape as usual. The Foundation’s disbursements in 2024 and 2025 (approximately \$2.7 million per year) are marked for visionary goals, some of which are discussed in Josh Pauli’s guest column. Much of what we raised in 2024 is restricted to the children’s facility capital campaign and will be disbursed to pay construction bills over the next two years.

Visit LifeScapeSD.org and watch the Journey newsletter to follow the progress of LifeScape’s goals. You’ll see the impact of your generosity across the organization. We are grateful for your continued support!



Jessica B. Wells
LifeScape Foundation President

Medical Staff

Chief of Medical Staff

Linné Curtis-Bayt, MD
Pediatrics

Greg Alvine, MD
Orthopedic Surgery

Courtney Backer, MD
Pediatrics

Barry Bauer, MD
Pediatrics

Elizabeth Bauer, MD
Pediatrics

Julia Blue, DO
Pediatrics

Daniel Boadwine, MD
Pediatrics

Rochelle Boote, MD
Pediatrics

Charles Broberg, PA-C
Physical Medicine & Rehabilitation

Neil Brummond, MD
Internal Medicine

Kara Bruning, MD
Pediatrics

Shannon Carruthers, MD
Pediatrics

Aaron Clem, MD
Pediatric Cardiology

Richard Curd, MD
Orthopedics/
Orthopedic Surgery

Jared Daniel, MD
Orthopedic Surgery

Laura Davis-Keppen, MD
Pediatric
Endocrinology/Genetics

Cintha Del Castillo, MD
Pediatrics

Sarah Dorr, PNP
Pediatric Surgery

Brock Doubledee, DO
Pediatric
Gastroenterology

Shari Eich, MD
Pediatrics

Shannon Emry, MD
Pediatrics

David Ermer, MD
Pediatric Psychiatry
& Neurology

Aleesa Fedt-Arbo, MD
Pediatrics

Nancy Free, DO
Pediatrics

Sara Free, MD
Pediatrics

Andrew Georgiadis, MD
Pediatric Orthopedic Surgery

William Hadden, MD
Pediatric Orthopedic Surgery

Geoffrey Haft, MD
Orthopedic Surgery

Jennifer Hagggar, MD
Pediatrics

Karen Hanisch, CNP
Pediatric Endocrinology

Lea Heidenreich, MD
Pediatrics

Scott Henry, MD
Pediatrics

Bianca Johnson, MD
Pediatrics

Heather Johnson, CNP
Pediatric Neurology

Julie Johnson, MD
Physical
Medicine & Rehabilitation

Jennifer Keating, MD
Psychiatry

Carolyn Kippes, MD
Pediatric Developmental
& Behavioral

Nathan Koens, PA-C
Physical Medicine &
Rehabilitation

Pamela Koepsell, CNP
Pediatrics

Rick Kooima, MD
Pediatrics

Katie Larson, MD
Pediatrics

Mirtha G Gayoso Liviach, MD
Pediatrics

Miranda Lommen-Milke, DDS
Dentistry

Edward Mailloux, MD
Pediatrics

Daniel Mark, MD
Pediatrics, Hospice/
Palliative Care

Christiane Maroun, MD
Pediatrics

Scott McKercher, MD
Pediatrics

Ryan Miller, MD
Internal Medicine

Ariane Moffett, DO
Pediatrics

Stephen Nanton, MD
Pediatric
Gastroenterology

Candice Nelson, MD
Pediatrics

Tom Novacheck, MD
Pediatric
Orthopedic Surgery

Gulsah Olgun, MD
Pediatrics

Keri Orstad, MD
Family Medicine

Kayli Reece, MD
Pediatrics

Jenifer Reitsma, CNP
Pediatric Surgery

Jon Ryckman, MD
Pediatric Surgery

Haripriya Santhanam, MD
Pediatrics

Michelle Schimelpfenig, DO
Pediatrics

Samuel Schimelpfenig, MD
Pediatrics,
Sports Medicine

Erin Schroeder, FNP
Pediatrics

Sarah Scott, MD
Pediatrics

Rajesh Singh, MD
Psychiatry

J.B. Skibinski, DDS
Pediatric Dentistry

Kristin Stuive, MD
Pediatrics

Kassy Thorpe, MD
Pediatrics

Michelle Van Beek, MD
Pediatrics

Janelle Vande Griend, CNP
Pediatric Surgery

Wilfredo Veloira, MD
Pediatric Pulmonology

Joseph Vogel, MD
Pediatrics

James Wallace, MD
Pediatric Pulmonology
Medicine

Zachary Weber, MD
Pediatrics

Donna Weinacht, MD
Pediatrics

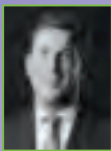
Laura Whittington, DO
Pediatrics

Aaron Zylstra, MD
Pediatrics

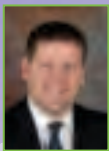
Governing Board of Directors



Steve Watkins
CEO



Bob McNaney
Chair



Jay Soukup
Vice-Chair



Marli Schippers
Past Chair



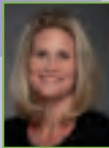
Josh Pauli
Secretary



Teresa Ward
Treasurer



Doug Berkland
Member at Large



Erica DeBoer



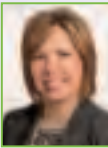
Jason Hubers



Rick Kiley



Tamera Larsen-
Engelkes



Kimberly Nooney



Erik Nyberg



Jeff Hilgenberg



Jessica Wells
Foundation
President

Foundation Board of Directors



Jessica Wells
Foundation
President



Jeff Hilgenberg
Chair



Sandy Schoenbeck
Vice-Chair



Erik Nyberg
Past Chair



Alan Meier
Secretary



Ryan Brunner
Treasurer



Nic Knapp
Member at Large



Nick Brown



Joel Dykstra



Mary Olinger



Grady Pfeiffer



Harlan Schillinger



Heidi Schultz



W. Tom Simmons



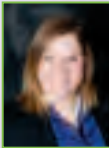
Sonja Theisen



Ryan Vanden Bosch



Bob McNaney



Marli Schippers



Steve Watkins
CEO

Thank You to

Our 2024 Event Sponsors

Champions

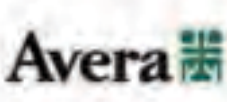


LifeScape
Ambassadors

Leaders



Sioux Falls & Brookings



Advocates



Believers

501st Central Garrison
South Dakota Ghostbusters
Angel's Catering
Augustana Football Athletics
Belle Fourche Community Center
Black Hills Area Community Center
Black Hills Energy
Black Hills Federal Credit Union
Black Hills Tires
Builders First Source Rapid City
Caribou Coffee
Casey Peterson, LTD
Central Bank - Main Office
Chesterman's Coca-Cola Bottling Co.
Cinnabon
CNA Surety
Colonial House
Color Splash
CorTrust Bank
Crave American Kitchen & Sushi Bar
Crawford's
Critic's Bar and Rosken's Pizza
Dakotah Bank
DART Boutique
Kenneth Daugherty
Davenport, Evans, Hurwitz & Smith, LLP
Denny Sanford Premier Center
Double D's
Drew Marco
Drew Munson
El Riad Shrine Clown
Fazzoli's
First Interstate Bank
Five Guys Burgers & Fries
Fourteen Foods Dairy Queen

Fresh Horses Saloon
Gateway Autoplex
Julie Gehm
Golf Addiction
Good Stuffed Food
Grand Falls Casino & Golf Resort
Granite City
Great Shots
Health Source Chiropractic
Hoffman Graphic Design
Holiday Inn Spearfish
Honey Baked Ham
Hood & MED Magazines
Hy-Vee
I'd Etch That
Independent Insurance Agents of Rapid City
Interstate Office Products
Intoxibakes
J&R Smith Construction Inc.
John's Crazy Socks
KJ Engineering
Karl's TV & Appliance
John and Kristin Knapp
Nic and Jerica Knapp
Lawrence & Schiller
LifeScape Ambassadors
LifeScape Employees
Little Caesar's Pizza Spearfish
Lloyd Companies
Marco Technologies
Marco's Pizza
Mel's Auto Body
Midwest Communications
Mike Shaw Productions
Millstone Family Restaurant
Monarch Sales
Murphy's Pub & Grill
Nooney & Solay

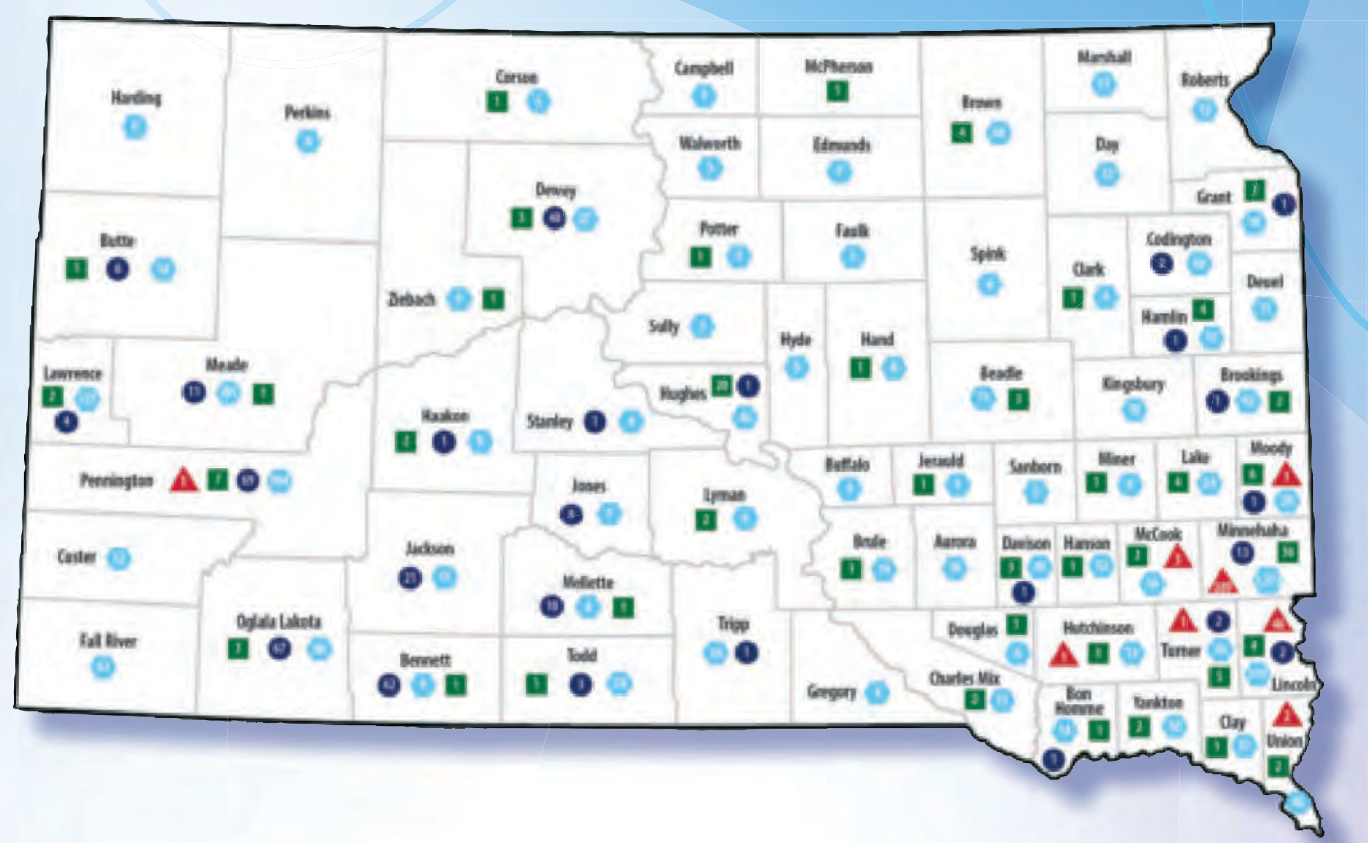
Northern Hills Veterinary Clinic
O'Reilly Auto Parts
Olson Oil / Blue Tide Car Wash
Original Pancake House
Papa John's
Papa Murphy's
Papa Woody's Woodfired Pizza
PatientX
Pepper Entertainment, INC
Philly Ted's
Pizza & More
Pizza Ranch
Plums Cooking
Prairie Green Golf Course
Preferred Printing
Queen City Bakery
Rapid City Rush
Rapid Rooter
Kilby Rech
ReliaBank
Remedy Brewing Co.
Reptile Gardens
RESPEC
Results Radio TownSquare Media
Riverfront Broadcasting
Rough Cut Social Axe Throwing
Rush Mountain Adventure Park- Rushmore
Cave
Rushmore Hotel
Safari Bar & Grill
Sauce Junkie
Russell Saulters
Thomas Saunders
Scheels All Sports, Rapid City
Scheels All Sports, Sioux Falls
SDN Communications
Sickies Garage
Rylan Silbernagel

Sioux Falls Canaries
Sioux Falls Golf
Sioux Falls Stampede
Skate City SD
Slumberland
Jocy and Joe Smith
South Bar
Squealer's Smoke Shack Bar & Grill
Mary and Rob Stanton
Rebecca Stertz
Stone Cold Music
Taco John's
Texas Roadhouse
The Cake Lady
The Country Club of Sioux Falls
The Empire Mall
The Keg Chicken
The Lodge at Deadwood
The Original Pancake House
The Sioux Falls Detective Theater
Thunder Road
Timberwolves NBA Team
Timmons Market- Box Elder
Timmons Market- Rapid City
Toppers Pizza
Tulle Companies
Vanocker Company
Vern Eide MotoPlex
Vern Eide Motorcars
Vikings NFL Team
Ginger Vollmer
Walmart
Washington Pavilion
WD Masonry & Concrete
Kyle Wehrle
West Mall 7 Theaters
Beth and Greg Wilcox

Media Sponsors



LifeScape Served 4,914 People in Fiscal Year 2024



We Provided Services to Children and Adults from all of South Dakota's 66 Counties.

- **Children's Services: Includes Specialty Hospital, Residential, Specialty School & Pathways**
142 children served from South Dakota.
- **Outreach/Outpatient Services:**
311 children served from South Dakota.
- ▲

Adult Community-Based Services:
444 adults served from South Dakota.
- ⬡

Outpatient
4,200 children and adults served from South Dakota.

Towns/Cities in South Dakota Served by LifeScape

Aberdeen	Bridgewater	Colton	Estelline	Groton	Ideal	Little Eagle	Murdo	Plankinton	Saint Francis	Trent	Wessington
Agency Village	Britton	Corsica	Ethan	Harrisburg	Interior	Long Lake	Nemo	Platte	Saint Lawrence	Tripp	Wessington Springs
Alcester	Brookings	Creighton	Eureka	Harold	Ipswich	Lower Brule	New Underwood	Pollock	Saint Onge	Twin Brooks	Westport
Alexandria	Bruce	Crooks	Fairburn	Hartford	Irene	Madison	Newell	Porcupine	Salem	Tyndall	White
Allen	Bryant	Custer	Faith	Hayti	Iroquois	Manderson	Nisland	Prairie City	Scotland	Union Center	White Lake
Arlington	Bualo	Dakota Dunes	Faulkton	Hazel	Isabel	Marion	Norris	Presho	Selby	Utica	White River
Armour	Burke	Davis	Flandreau	Hecla	Java	Martin	Oelrichs	Pringle	Sherman	Vale	Whitewood
Aurora	Camp Crook	De Smet	Florence	Henry	Jeerson	McCook Lake	Oglala	Pukwana	Sioux Falls	Valley Springs	Willow Lake
Avon	Canistota	Deadwood	Fort Pierre	Hereford	Kadoka	McLaughlin	Okaton	Quinn	Sisseton	Vermillion	Wilmot
Baltic	Canova	Dell Rapids	Fort Thompson	Hermosa	Keystone	Meadow	Okreek	Ramona	South Shore	Viborg	Winner
Bath	Canton	Delmont	Frederick	Hetland	Kimball	Mellette	Olivet	Rapid City	Spearsh	Volga	Woonsocket
Belle Fourche	Caputa	Dimock	Freeman	Highmore	Kyle	Menno	Onida	Raymond	Spencer	Volin	Worthing
Belvidere	Castlewood	Dupree	Fruitdale	Hill City	Lake City	Miller	Owanka	Redeld	Springeld	Wagner	Wounded Knee
Bemis	Centerville	Eagle Butte	Gann Valley	Hitchcock	Lake Norden	Milbank	Parker	Ree Heights	Stickney	Wakpala	Yankton
Beresford	Chamberlain	Eden	Garretson	Holabird	Lake Preston	Miller	Parkston	Renner	Sturgis	Wall	
Big Stone City	Chancellor	Edgemont	Gary	Hot Springs	Langford	Mission	Parmelee	Ridgeview	Summerset	Wanblee	
Bison	Chester	Egan	Gayville	Hoven	Lantry	Mitchell	Peever	Rockerville	Summit	Wasta	
Black Hawk	Claire City	Elk Point	Geddes	Howard	Lead	Monroe	Philip	Roscoe	Tabor	Watertown	
Blunt	Clark	Elkton	Gettysburg	Humboldt	Lemmon	Montrose	Piedmont	Rosebud	Tea	Waubay	
Box Elder	Clear Lake	Ellsworth AFB	Goodwin	Hurley	Lennox	Mount Vernon	Pierre	Rosholt	Timber Lake	Webster	
Brandon	Colman	Emery	Gregory	Huron	Letcher	Mud Butte	Pine Ridge	Roslyn	Toronto	Wentworth	

699 Children and Adults were from other states:

Iowa	Minnesota	Mississippi	Montana
325	209	1	9
Nebraska	North Dakota	Wisconsin	Wyoming
64	26	2	63

Children's Services: Includes Specialty Hospital, Residential, Specialty School & Pathways
30 children served from four surrounding states; Iowa, Minnesota, Nebraska and North Dakota.

Outreach
5 children and adults served from three states; Iowa, Minnesota & North Dakota.
Some individuals were served in more than one area.

Adult Community-Based Services
1 adult served from Iowa.

Outpatient
667 children and adults served from eight states; Iowa, Minnesota, Mississippi, Montana, Nebraska, North Dakota, Wisconsin & Wyoming.

Being a Surrogate Parent is a Life Changer

By Guest Columnist Kathy DenOtter, Humboldt, SD

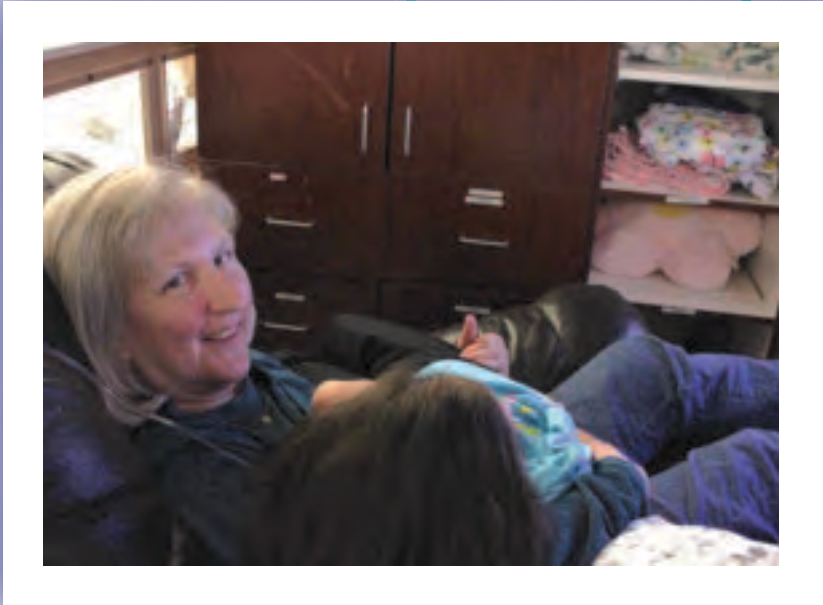
I started volunteering in a classroom two years ago at LifeScape. My daughter teaches there and asked if I'd like to volunteer at school. Without hesitation I said, "Sure! I'd love to." That is the moment when God's plan started to unfold before my very eyes.

I met a little girl who was 6 years old at the time. She was kind of quiet and reserved, but she soon stole my heart. Although she doesn't speak, that didn't stop us from developing a special bond that I will forever cherish.

After several months of volunteering, I found out she needed a surrogate parent to represent her on her Individual Education Plan. I was asked if I'd be interested in becoming this little girl's surrogate. Again, without hesitation, I said "Absolutely." I wasn't familiar with the surrogate parent program, so I just let God take the lead.

I became her surrogate parent in mid-summer, advocating for her in her education program. By then, we had developed such a bond that I wanted to become more involved in her life. I was approved to take her on an outing to Levitt at the Falls for a family reunion. I was so nervous about how it would go. The reunion was on my mom's side of the family, and as you probably know, the Irish love to talk. I had nothing to worry about—she stole everyone's heart, and they loved talking to her and watching her "dance" to the music.

After the initial outing went so well, we took her on all kind of adventures. She's been to the Mall of America, the Omaha Zoo, and even took a cruise on the Mississippi River while meeting my extended family from Texas. This last Thanksgiving, we took her to the Black Hills and went for a ride on the 1880 train to meet Santa at the North Pole. Her favorite place to visit is my nephew's house because he builds race cars. It is her favorite thing to talk about on her communication device. She is the best traveler and it is so fun to experience these new places through her big, beautiful, brown eyes. These are just a few of the adventures we've been on in the last year and a half. We do have some down time together and I will visit her in her dorm room and cuddle in the recliner watching a movie or Taylor Swift videos. I really love those moments.



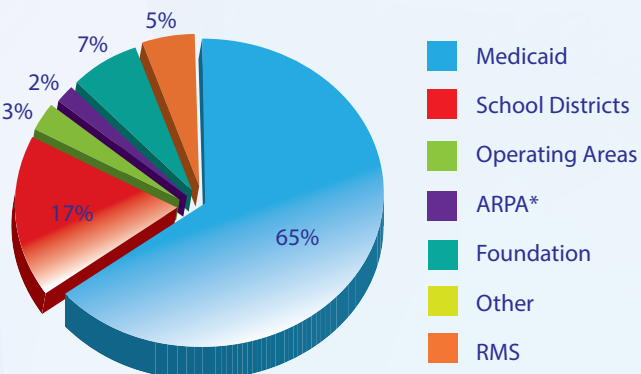
Kathy and her surrogate child enjoy snuggling and watching a movie at LifeScape.

I've seen huge changes in her since becoming her surrogate parent. She seems more confident and smiles more. Using her eye gaze communication device, she loves to tell everyone about her extended family and our adventures. She has a huge extended family that loves her and she is such a blessing to all of us. I'm so grateful for the surrogate and volunteer programs at LifeScape. This little girl has been a huge and wonderful life changer for me.

To learn about being a surrogate parent to advocate for a child in their Individual Education Plan, contact Special Education Director Shelly Bohy at shelly.bohy@LifeScapeSD.org

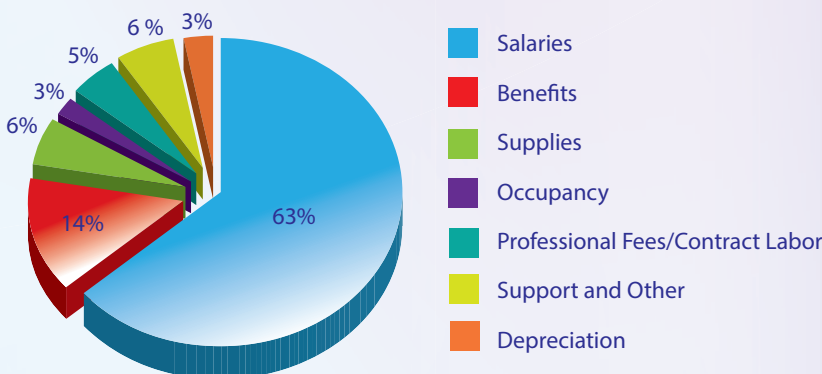
2024 LifeScape Audited Revenues Total: \$94,231,205

*ARPA - \$4.2 million in American Rescue Plan Act funding provided for one-time funding for adult services and assistive technology COVID response, home and community based settings compliance, staff recruitment, training and retention, and vehicle purchase.



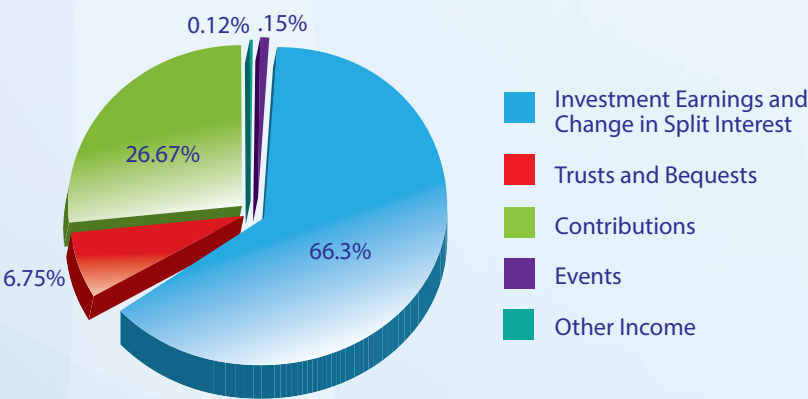
We do not budget for unrealized market gains and losses or the sale of investments.

2024 LifeScape Audited Expenses Total: \$83,845,100



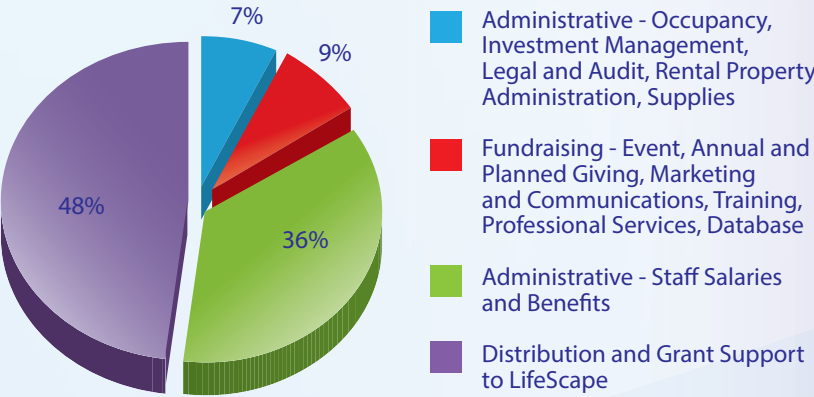
2024 LifeScape Foundation Audited Revenues Total: \$28,793,523

Net Unrealized Gain on Investments of \$5,088,608 is not included below.



2024 LifeScape Foundation Audited Expenses Total: \$2,179,127

Of the total expenses, nothing is included for a distribution to the service provider LifeScape, because no distribution was made in FY24. LifeScape Foundation has a spending policy which allows for distributing 4% of the 16-quarter rolling average of the endowment's market value. The policy protects the endowment from inflation, provides for endowment growth, and makes possible a distribution amount for program support. Foundation funds are being held for distribution throughout construction of the new Children's Campus in 2026.



Upcoming LifeScape Events!

March 19, 2025: East River Electric Online Auction for LifeScape. An online auction to benefit LifeScape will be held on March 19th from 9:00 a.m. to 9:00 p.m. at EastRiverforLifeScape.org. Preview of the auction items will be available in the days leading up to the auction.

March 20, 2025: East River Electric 4-Wheeler Raffle for LifeScape. Tickets are now on sale at \$100 each at EastRiverforLifeScape.org. 350 tickets will be sold with the drawing on March 20th, with 2nd prize \$500.

March 23, 2025: LifeScape Night at the Rush! It's the last regular game of the season, and Sensory Friendly Night, with toned-down noise. Get tickets with the special link at LifeScapeSD.org and part of your purchase will be donated to LifeScape in Rapid City. Gametime vs. the Wichita Thunder is 4:05 p.m. at The Monument in Rapid City.

April 25, 2025: Artability. LifeScape artists will participate in the 12th annual Artability exhibit and reception, hosted by the mayor's Disability Awareness and Accessibility Review Board (DAARB). Works will be available for purchase with artists accepting cash, check, or Venmo. 5:00-7:00 p.m. at the Underground by Rehfeld's, 431 N. Phillips Ave., Sioux Falls.

June 7, 2025: "Empowered By LifeScape" TV special. A half-hour Dakota News Now special on the innovations and empowerments happening every day at LifeScape! After airing on KDLT-TV, "Empowered by LifeScape" will be posted at DakotaNewsNow.com and LifescapeSD.org

June 21, 2025: Small Shops, Big Impact. A benefit for LifeScape presented by Sammons Financial Group. Join us on June 21st for a day of impact, empowerment, and shopping! LifeScape's Shop Small, Big Impact event not only provides support for people at LifeScape, but also to the small businesses located in the Sioux Falls area. SmallShopsforLifeScape.org will have the details.

July 25-27, 2025: 56th Annual Winner Elks Rodeo. Three days of classic rodeo events at the Winner, SD Fairgrounds to benefit children's outreach services across South Dakota.

July 26, 2025: LifeScape Center for the Arts Performance at ADA35. The LifeScape Center for the Arts will partner with the Black Hills Playhouse to stage a Broadway revue at the ADA35 Festival. The cast will share their talents through song and dance to celebrate the 35th anniversary of the Americans with Disabilities Act. The festival will be held at the Levitt in downtown Sioux Falls. It is free and open to the public, with programming all day, plus vendors and food trucks.

August 3-8, 2025: Camp Bravo. A performing arts day camp, led by the LifeScape Center for the Arts and Black Hills Playhouse at Augustana University in Sioux Falls. Performers of all abilities, ages eight to 30, will learn from theatre professionals and create a full-scale stage performance. There will be fun breakout sessions for games, arts and crafts, designing, dancing, and a runway show of costumes.

Fall 2025: 7th Annual LifeScape Cornhole Tournament. To be held at the Lodge at Deadwood Resort. For details, check LifeScapeCornhole.org closer to the event.

February 7, 2026: MallWalk 32. Join us at the Empire Mall to Walk 'n' Roll for LifeScape! LifeScapeMallWalk.org will open for registrations and fundraising in November!

Get details on all these events at www.LifeScapeSD.org, or call the LifeScape Foundation at (605) 444-9800.

The LifeScape Foundation office has moved!
Our new address is 3803 N. Louise Ave., Sioux Falls, SD 57101-0115. We are right off Benson Road and Career Ave., near the new LifeScape Children's Services campus!



empPOWERED
by LifeScape

A Dakota News Now special
on children and adults being empowered
to live their best lives!

DAKOTA NEWS NOW

Tune In for the
"Empowered by LifeScape"
Special!

Airing on:
■ **KDLT: Saturday,
June 7, 6:30 pm**

Presented By
Sammons
FINANCIAL

Shelly Greenhoff plays BINGO with Jerry Klein, a volunteer and former LifeScape employee. Jerry hosts periodic pizza parties at his home in Dell Rapids for groups of old friends he worked with at LifeScape.



Easy Estate Planning Steps for Peace of Mind

Jessica B. Wells, CFRE
LifeScape Foundation President

In the Midwest, folks don't tend to talk much about their own deaths or their money. Generally, I'd say we're a pretty private lot. While we're not ones to boast and flaunt what we have, remaining silent about your estate plan can leave your loved ones with extra burdens to carry while grieving. Planning and having clear conversations can ease the burdens and ensure your legacy is preserved.

The easiest planning you can do is to update your beneficiary designations. You can designate beneficiaries on life insurance policies, retirement accounts 401(k)s, IRAs, 403(b)s, and other pension plans. You can establish "pay-on-death" designations on bank accounts (checking, savings, and CD accounts) or "transfer-on-death" designations for brokerage accounts that transfer securities directly to beneficiaries. Beneficiary designations ensure your financial assets are distributed to the people and charities important to you.

Creating a will helps define how and to whom you wish your property to go after your death. A will does not override beneficiary designations on individual assets. Creating a living will establishes instructions for your healthcare provider as to the circumstances under which you want life sustaining treatment provided, withheld, or withdrawn. Setting up a Durable Power of Attorney for Healthcare gives the designated person authority to make health care decisions on your behalf. The living will provides

directions as to your wishes in this area. Setting up a Durable Power of Attorney for Finances gives the designated person the authority to make legal/financial decisions on your behalf. You can designate the same person for both roles or choose different people for each.

Important conversations to have include asking the person you wish to serve as your durable power of attorney if they are comfortable with the responsibilities expected of them. Share where to find important documents related to your estate. Talk through different scenarios of what kind of treatment you want or do not want regarding healthcare decisions. Make sure your family knows any charitable designations you've made. Talk about personal possessions and family heirlooms - different items may have sentimental value to different members of the family, some may be cherished by all. Conflicts over sentimental items can cause division in even the most close-knit families. Having these important discussions before a heavy layer of grief and stress is laid over your loved ones when you die is an act of love you can provide now.

Learn more about planned giving at LifeScapeGift.org

Four-year-old Kiki Enger of Ipswich gets some outdoor time with her teacher, Abby Oien. Kiki uses a ventilator to breathe, and her portable ventilator allows her playtime outside in fair weather.



Needs & Dreams Wish List

Your gift helps change lives.

Many people like to provide specific gifts to impact individuals in a very direct way. Here are some ways you can enhance the lives of people with disabilities at LifeScape.

\$2,500

- ☐ Pavilion Performance Series
- ☐ Rent Assistance
- ☐ Food Assistance

\$1,500

- ☐ Pavilion Mini Performance Series for 4
- ☐ Home Modifications

\$750

- ☐ Canaries Season Tickets
- ☐ Protective Head Gear

\$500

- ☐ Stampede Season Tickets
- ☐ Hearing Assistive Device

\$250

- ☐ Storm Season Tickets
- ☐ Transportation Funding

\$200

- ☐ SkyForce Season Tickets
- ☐ Wii Gaming System

\$100

- ☐ Tickets to Play at Pavilion or Orpheum
- ☐ Tickets to Concert
- ☐ Environmental Control Switches
- ☐ Wheelchair Express Tickets

\$50

- ☐ Hy-Vee or Target Gift Card
- ☐ Restaurant Card
- ☐ Arts and Craft Supplies
- ☐ Wii Games

\$25

- ☐ Men's/Boy's Underwear
- ☐ Women's/Girls Underwear

If you wish to provide one of the above needs, please check the item and send this form with your gift to LifeScape Foundation, 3803 N. Louise Ave., Sioux Falls, SD 57101-0115. Or, scan the QR code below which links to our donation page at LifeScapeSD.org. If you have any questions, call us at 605-444-9800 or email giving@LifeScapeSD.org

Scan this QR code to link to our donation page on LifeScapeSD.org



Thank you for your generous support!



Get Social: Find us on Facebook, X, LinkedIn, YouTube, and Instagram!



Thank You From LifeScape!

Annual Report of Donors

January 1, 2024 - December 31, 2024

2024 CASH DONORS

List includes \$250+ donors. For a complete list of gifts, visit www.LifeScapeSD.org/foundation

We strive to accurately list all of our donors. If we have missed a name or misspelled a name, it was not intentional.

Visionaries (\$50,000.00 +)

Anonymous (2)
MLAEA Charitable Fund of the SFACF
Harold and Helen Boer
Dan and Arlene Kirby Family
Restricted Fund of the SFACF
Donald and Phyllis Jerke
Revocable Trust
First National Bank
in Sioux Falls
First PREMIER Bank/PREMIER
Bankcard
Henry Carlson Co
Diane and Steven Love
Bernice Mabee
Nehring Family Nice
Foundation
Jeff and Trudiann Nelson
Larry and Ann Page
POET
Raymond and Deloris Dow
Irrevocable Trust
Sammons Financial Group
Jim and Angie Soukup
Wellmark Foundation

Champions - (\$20,000.00 +)

Anonymous (2)
Avera Health
Matt and Colleen Beckdolt
Citibank (South Dakota), N.A.
City of Sioux Falls
Fern M Chicoine Estate
John T. Vucurevich
Foundation
Phyllis Joyce
Donald Lamberti
Lloyd Companies
Lloyd E. Dahley Fund
of the SDCF
Jim McQuisten
Orlan Hayward Memorial
Trust
Scottish Rite Foundation
South Dakota Achieve
Endowment of the SFACF
South Dakota Elks
Association
Alan and Judy Spencer
The Bancorp
Tyler and Michelle Haahr
Charitable Fund of the SFACF

Leaders (\$10,000.00 +)

Kameron Amstutz/Music City
Indian Motorcycle
Anonymous (1)
CNA Surety
CorTrust Bank
Deloris Schneider
Revocable Living Trust
Elgethun Capital
Management Inc.
Tom and Barb Everist
Family Fund of the SFACF
First Bank & Trust N. A.
First Interstate Bank
GCC Rio Grande
Angie and Dr. Geoffrey Haft
Judy and Ray Jilderda
Joe and Jennifer Kirby
Charitable Fund of the SFACF
Chris Keller
William Locke Beach Trust
MarketBeat
Marsh McLennan Agency LLC
John and Cathy McCarthy
Molly McCarthy and
Ken Berger
Tony Mullen
Tom Neuburger
Kimberly and John Nooney
Mary Olinger
Orlan Hayward
Memorial Trust
Risk Administration Services
SD Law Enforcement Charity
Scott and Ronna Sletten
South Dakota Trust Company
Fred and Kitty Van de Perre
VanBuskirk Companies

Advocates- (\$5,000.00 +)

Anonymous (1)
Scott and Jennifer Becker
Bender Companies
Ty and Kathy Bennett
Geoff Best
Edgar O. Bunde Trust
Mick Cawthorn
CNH Industrial
Dan and Mary Culey
Cutler Law Firm, LLP
Dakota Vision Center
Dar and Jo Britzman Family
Endowment of the SFACF
Dizzo, Inc.

Dr. Mark and Sally Dominick
Kevin and Karen Doyle
Eide Bailly LLP
First Dakota National Bank
First International Bank
& Trust
Five Star Call Centers
of Sioux Falls
Bob and Jeanette Fraser
Henkel Foundation
Holmes Murphy
Steve Hutchins
ISG
Jim and Megan Jarding
JB Charitable Foundation
Kouri Insurance Agency
Midco
Joe Mielke
Myrl and Lois Unzelman
Family Fund of the SFACF
Alvin Scott
Sioux Falls Specialty Hospital
Jim and Angie Soukup
Charitable Fund of the SFACF
Sunrise Banks
Deane and Connie Teut
Eileen Van Soest
Walt and Jan Bones
Charitable Fund of SFACF
Waterbury Heating
& Cooling, Inc.

Believers - (\$2,500.00 +)

AARP South Dakota
Adolph Staudenraus Trust
John and Dianne Amdahl
Nick A. Bake
Betz Blinds
Jerrilyn R. Birnie
Black Hills Energy
Jon Borneman
Scott and Kristy Bulkeley
Tom and Linda Bunkers
Central Bank Main Office
Lauren Christensen
CocaCola Bottling Company
High Country
Coe & Dorothy Frankhauser
Trust
Brock and Rhonda Davidson
Dorsey & Whitney Trust
Company
East River Electric Power Coop
Pat Erpenbach
Bob and Shari Feinen
Deb Fischer Clemens
Nicholas Fraser
James and Gretchen Haahr
Judy Hagler
Roger W. Hexem
Erin and Jeff Horstmeyer
Interstate Office Products, Inc.
IS Restaurant Design
Equipment & Supply
Ed Jamerson
David and Janet Johnson
Brian and Vanessa Klock
Kwik Trip Stores Inc
Valerie and Richard Lietz
Lyon County Riverboat
Foundation
Paul Lyons
Bob McNaney
Alan Meier
Nyberg's Ace
Pendar Properties
Don and Ann Platt
Ralph and Helen Kranz Fund
of the SDCF
RBC Wealth Management
Foundation
Esther Rothermel Anderson
Kurt and Teri Rumens
Jim Shadley
Sioux Falls Area Community
Foundation
Sky Dine Inc
Trish and Robert Swanhorst
T. Denny Sanford Fund
of the SFACF
The Lynda B Advantage Corp
The Reformed Church
of Dell Rapids
Tony Ratchford Group
TSP, Inc.
Dean and Sharon Wartenbee
Gary and Tammi Wildes

Inspirers - (\$1,000.00 +)

Richard and Denise Abild
Alick Properties
Justyn Amstutz
Anonymous (3)
Robert and Karen Appelwick
Architecture, Inc.
Austad's Golf
Basin Electric Power
Cooperative
Bear Country USA
Douglas and Lana Berkland
Berkshire Hathaway Midwest
Realty

Bierschbach Equipment
& Supply
Black Hills Tire
Dale and Judy Blauwet
Boen & Associates, Inc.
Kim and Michelle Boever
BPO Does
Paul and Julie Bruflat
Charitable Fund of the SFACF
Ryan and Whitney Brunner
Darrell Butterwick
Cadwell, Sanford, Deibert &
Garry, LLP
Marie and Dewey Chapin
David M. Christensen
Claims Associates, Inc.
Click Rain Inc.
Janet and Dan Costello
Country Maid, Inc.
Randal Cramer
Deffenbaugh Homes
Rick and Barb DiSanto
Dan and Laura Donohue
Double D Real Estate Corp
Dana and LaDawn Dykhouse
Electric Supply Company
Charitable Fund of SFACF
Electronic Systems Inc.
Elks Lodge #2084 Rodeo
Enclose Manufacturing
Dalliss and Marion Englund
Ernst Capital Group
Evans Haigh & Arndt LLP
The Event Company
Cyril and Sandy Farner
Dr. Lawrence J. Fenton
Jason Forbes and Lynne
Keller Forbes
Joan Franken
Bobby Garone
Bobby Garone, Jr.
Kevin and Melissa Garry
Ray Hammer
Arlen L. Hauge
Highmark Erectors, Inc
Horner Barrow Orthodontics,
PC
Intek
Vicki L. Isler
Jeffrey and Mary Jo Murray
Charitable Fund of the SFACF
Jodder
Kathleen A. and Dusty Rick
Miller Endowment of the
SFACF
KELOLAND Media Group
Kimber & Aaron Severson
Family Charitable Fund of
the SFACF
Kitty Kinsman and Steve
Zellmer
Lee Raines Charitable Fund of
the SFACF
Lon Clemensen Charitable
Fund of the SFACF
James Mack
Jeffrey & Mary Jo Murray
Charitable Fund of the SFACF
Maximizing Excellence
Mike and Greta May
Michelle McCleerey
Thomas and Susan McDowell
Charitable Fund of the SFACF
McGough Construction
Tony and Dianna Mei
MIDCO Foundation
Kyle Mussman
Kameron Nelson
NexusVenture Group
Jerry and Jan Norskog
Peter Nowaskey
Erik and Caroline Nyberg
Rodora Nyberg
Oahe Foundation Crossway
Charitable Fund #2002
Harlan and Twila Oolman
Paceline Accounting Group,
LLP
Michael Pagnini
Jon Parmer
Dr. Patricia and Scott Peters
Sandra Preble
Pride Neon
Rave Family Living Trust
Gloria and Kenneth Reed
Judith Roberts
Rosemary Kadinger
VanderSchaaf Endowment
of SFACF
Sands Wall Systems, Inc.
Thomas Saunders
Scheels All Sports
Harlan Schillinger
Sandy Schoenbeck
Terry Schoening
Jason and Kimberly
Schoolmeester
Heidi A. Schultz
Debbie Schzelzi
Smit Family Farms, LLC
John and Patty Sneden
Jay Soukup
ElRoy Steinwand

Sue and Ronald Struck
Howard and Janet Stubbins
Michael Sweeney
Peter Tapken
The Sampson House
Thomas and Crystal Van
Wyhe Charitable Fund of
the SFACF
Thunder Road Of Sioux Falls
David and Dorinda
Timmons
Nicholas Trask
USD Student Nursing
Association
Tom and Crystal Van Wyhe
Jim Waggaman
Teresa Ward
Curly and Lisa Waugaman
Wayne & Mary's Nutrition
Center
Jessica and Todd Wells
Greg and Sandy Wick
Beth and Greg Wilcox
Woods, Fuller, Shultz &
Smith PC

Encouragers - (\$500.00 +)

Lisa and Chris Amundson
Anonymous (3)
Associated Consulting
Engineering Inc.
Barry Peterson Jewelers
Ar dys Becking
Kathy and Randy Becking
Mike and Lois Broderic
Sara Bybee
Wendy Clark
Dr. Dennis and Joan Clarke
Steve and Karen Conklin
Tonya and Charles Courtney
Nick Crank
Dacotah Bank
Day One Dentistry
Richard ad Catherine Dean
Delta Dental Plan of SD
Amber DeRouchey
DGR Engineering
Judy and Bob Domalewski
Matt Eslow
EyeSite
Fallen Hamsters
Arlin and Donna Fatland
FDR Foundation
First Interstate Bancsystem
Foundation
First Western Bank & Trust
Rebecca Fish
Anthony Ghandour
Brian Gould
Harold and Cheryl Hartin
Kathie and Doug Hartman
David Hill
Douglas R. Hoops
Joyce and Larry Horstmeyer
Nicole Howard
Jacqueline and Kevin Humke
Hymen and Nila Pitts Fund
of the SFACF
John Jessup
Karian Peterson Power Line
Contracting LLC
John King
Knights of Columbus Christ
the King
Knights Of Columbus St.
Mary's Council
Dr. Rick and Kathy Kooima
Robert and Lelani Kroeker
Last Generation Trucking LLC
Kila and Bob LeGrand
Ramsey Leighton
Dan and Becky Luke
Justin Lynch
Miles Maas
Gene and Susan McGowan
Dede Mogck
Joe T. and Cheryl Moore
Donald and Barbara
Mullaney
Nooney & Solay, LLP
Northern Hills Veterinary
Clinic, PC
Jan and David Osborn
Paws Pet Resort
Jeff and Lori Petersen
Cynthia Phillips
Blake Popejoy
Joy Prehn
Wade and Alicia Price
Marlene and Donald
Rabenberg
Jason Ralph
Art and Bev Richert
Aaron Rietsema
Peter Robinson
Shelby Rumens
Lars and Jonhsana Rydstrom
Bob and Christine Sahr
Bart and Nicole Samuelson
Phyllis Schievelbein
Marli and Jared Schippers

Chris and Marilyn Schmid
Katie Schoon
SDA Lauren, LaDonna and
Paul Christensen of the
SFACF
Marvin and A.J. Sherrill
Sioux Falls Cosmopolitan
Club
Jocy and Joe Smith
Margo Snow
Marilyn Stemp
Dr. Raed A. Sulaiman
and Dr. Christiane Maroun
Chris and Stephanie Thill
Michelle and Brian Tull
Kristin and Ryan Tuttle
Ryan and Beth Vanden
Bosch
Sherry and Kelly VanMeter
Vern Eide Motorcars
Marcia and Jim Vlaminck
Steve and Angela Watkins
Dr. Donna Weinacht
Jeremy Wermers
Austin Williams
Stephan and Tavia Wilson
Eileen Winter
WL Plastics
Dr. John C. Yu and Emilie Ng

Partners - (\$250.00+)

Zachary Adams
Sarah and Brennen Ahlers
Anonymous (5)
Heidi and Scott Bakke
Chelsie Bakken
Mike and Suze Bayne
Charles Bennett
Cecily Betz
Don and Leona Bierschbach
Big Bore Barbecue Company
Patty Bliss
Kathy and Doug Blomker
Larry Bohn
Shelly Bohy
Calvin Borneman
Mark Braaten
Jordan Brown
Carl & Charlotte Van de Waa
Estate
CF Promo
Brad and Cindy Chandler
Kathy and Durwood
Clauson
Allen Clayton
Jay Cleveland
Carrie Congdon
Shane Conrad
Randy and Linda Cundy
D & J Trucking
Dona Daniels
John DeFazio
Delaware Women's
Ministries
Jarad Deters
Megan Dibble
Doug Diekmann
Karl and Ruth Dunkle
Matt DuVall
Echo Group Inc.
Einspahr Auto Plaza
Diane Engbrecht
Daniel Engebretson
Farmers & Merchants Coop
Oil Co.
Derek Fessler
Gayle and Todd Finn
William V. Fischer
Stacy and Tim Flahaven
Daniel Fouberg
Lisa Fox
Brent Fraser
Freda B. Lemke Fund
of the SFACF
Marlyn and Maureen Friesen
Galvanizers, Inc.
Julie Gehm
Yale and Judy Gelfant
Robert and Tracy Gilliland
Jeremy Gold
Terry Gosmire
Kelly and Tania Grogan
Randy Haak
Kory Hammerbeck
Kathy and Wayne
Hammond
Healthsource of Rapid City
Sandy Hesse
Jack and Gina Hopkins
Brook and Darcie
Horstmeyer
Patrick Hurrin
Jessica Immecker
Morri Irvin
Jerry's Electric
Pam Johnson
Christine Jones
JT Trucking, Inc.
Madacadel Juarez
KLJ Engineering

Brian Kogel
Norma B. Kruger
Grey and Carleigh Lampkin
Tony and Kelli Larimer
Taylor Larson
Jeff Levy
Madison Discount Liquor
Trevor Madore
Mahlander's, Inc.
Kimberly Marso
Jason Martin
Brian Maude
May & Johnson, PC.
LaDell and Donald Mertens
Kevin and Dawn Metzger
Shawn and Stephanie Miller
Tara Miller
Robin Mills
Debbie Nelson
Max Ness
Bob and Kris O'Connell
Trisha Ollerich
Sharon and Mark Olson
Bonnie and David Omdahl
Leah Orsack
J. David and Barbara
Overland
Pathward Financial, Inc.
Dr. Josh and Samantha Pauli
Dean and Vonne Perkins
Prairie Hills Covenant Church
Prostrollo Motor Company
Carl Pusser and Cindy
Dunn Pusser
Lori L. Rath
Steve Reed
Jamie Reindl
Robert D. Rickel
Riggin Flight Service
JR and Kelly Riley
John and Kay Rozell
Dave and Tammy
Rozenboom
Sirumugai Saravanan and
Malarvizhi Natarajan
River and Sarah Sarbacker
April Schaeffer
Alda and Bill Severson
Katie Skroch
Rebecca and Shane Sluiter
Tony Smith
Nicole Smith
Nate Sneden
SDA Leonard H. Johnson
Endowment of the SFACF
Lon Stickney
Todd Stone
Barbara Strom
Chris Studer
Bryce Summers
John and Terri Szeszulski
Chad and Nichole Teubert
Texas Roadhouse
Dane Theisen
Sonja and Eric Theisen
Richard Thurman
Patrick Tiede
Jason Tinklenberg
Traverse Electric Cooperative,
Inc.
Corey Ulrickson
Nathan Ward
Robert and Kay Watkins
Andrew Weber
Timothy and Brenda Welbig
Wells Fargo Community
Support
Michele and Dan Whitlock
Gilby's LLC
Brian Gould
Loretta Greenberg
Kenadee Hackett
Kim and Jim Haiar
Toni Harmdierts
HDG, LLC
Mark Hendrix
Dawn Hieb
Hoffman Graphic Design
Id Etch That
Kris Ivey
Jack Daniel's
Linda James and Phil
Stadden
Jeff Styles Pinstriping
Dave and Kandy John
Hanna Johnson
Karl's TV Appliance and
Furniture
Kathleen's Unique Boutique
Kameron Keck
Michael and Ann Marie
Keene
KELOLAND TV
Rob Kenney
Killian's Food & Drink
Gerald L. Klein
Klock Werks Kustom Cycle
Knecht Home Center
Carol and Bill Kollis
Klarissa Krcil
Neal Krottch
Landscape Garden Centers
Tony and Kelli Larimer
Dennis and Sheila Larson
Wendy LaVergne
Valerie and Richard Lietz

Gifts of Products, Supplies & Services

Jan. 1 through Dec. 31, 2024

Wesley and Traci Adams
American Legion Post 15
Kameron Amstutz
Nick Anastasakos
Wayne Anderson
Anonymous (1)
Arlen Ness Enterprises
Jared Armon
Freddie Arnold
Randy and Hilary Aron
B & L Customs
Brenda Bainbridge
Barry Peterson Jewelers
Janice G. Bartels
Susan Baumer
Matt and Colleen Beckdolt
Brad Bennett
Big Bore Barbecue Company
Erik Bjorn
Black Hills Pioneer
Bill Blackmore
Jon Borneman
Brandon Lutheran Women
of E.L.C.A
Bill and Becky Brennan
Brock's Performance
Karla and Daniel Brown
Builders First Source
Buffalo Jump Saloon &
Steakhouse
Elaine Burma
Darcy and Randy
Burner Christenson
C & S Pest Control
CF Promo
Cheyenne Crossing
ChickfilA
Claire Colby
Coca-Cola Bottling Company
- Chesterman
Coca-Cola Bottling Company
- High Country
Country Maid, Inc.
Nick and Lexis Cramer
Chelsea Cronin
Dakota VTwin
Dakota News Now
Leonardo D'Aniello
Katie Daniels
Dave's Deli Delights
Carol M. Doss
Bob Dunn
East River Electric Power Coop
Rose Ebdrup
Elkhorn Ridge Golf Club
EmBe
Jeff and Yvonne Erb
Carolyn Erickson
Henry Evans
Exit 8 & 14 Phillips 66
Farmhouse Bistro and Bar
Arlin and Donna Fatland
Derek Fessler
Jim and Sonia Flickinger
Jim and Diana Fly
Brent Fraser
Terry Fuller
G & D Viking Glass
Gage Bros. Concrete Products
Julie Gehm
Richard Geiser
Yale and Judy Gelfant
Gilby's LLC
Brian Gould
Loretta Greenberg
Kenadee Hackett
Kim and Jim Haiar
Toni Harmdierts
HDG, LLC
Mark Hendrix
Dawn Hieb
Hoffman Graphic Design
Id Etch That
Kris Ivey
Jack Daniel's
Linda James and Phil
Stadden
Jeff Styles Pinstriping
Dave and Kandy John
Hanna Johnson
Karl's TV Appliance and
Furniture
Kathleen's Unique Boutique
Kameron Keck
Michael and Ann Marie
Keene
KELOLAND TV
Rob Kenney
Killian's Food & Drink
Gerald L. Klein
Klock Werks Kustom Cycle
Knecht Home Center
Carol and Bill Kollis
Klarissa Krcil
Neal Krottch
Landscape Garden Centers
Tony and Kelli Larimer
Dennis and Sheila Larson
Wendy LaVergne
Valerie and Richard Lietz

Scott and Letti Lister
Lucky's 13
Doug Lueders
Marcy Madson
Belinda and Grant Martinson
Keith McClure
Bob McInrey
Rhonda McKenzie
Brian and Destany Mendoza
MIDCO
Audrey MillerBrush
Montgomery Motorsports
Miranda Morris
Motorcycle Safety Lawyers
MTI Ready Mix
Donald and Barbara
Mullaney
Mural Lab
Museum Of Visual Materials
NC Machine & Tool Co.
Cory Ness and Christine
LePera Ness
Nonna's Kitchen
"Slick" Norkaitis
Linda and Richard Nuytten
Ohio Hamsters
Nancy and James O'Neill
O'Reilly Auto Parts
David Otten
Padres
Paladin Dynamics
Party Time Liquor
Paul Yaffe Originals
Perkins Restaurant & Bakery
Peska Construction
Miranda and Neal Petersen
Kurt Peterson
Grady and Sue Pfeiffer
Carson Phillips
Precision Computer Systems
Diane Rankin
Gloria and Kenneth Reed
Reliabank
Vonny and Edwin Revell
Andi Ribstein
RiverFront Broadcasting
RNR Cycle
Ronald McDonald House
Charities of SD, Inc.
Kurt and Teri Rumens
Saddlemen Seats
Bill and Coleen Schildhauer
Katie Schoon
Scott Jacobs Studio
Jason Sehr
Laura Severson
Jim Shadley
Shalom Christian Reformed
Church
Thomas Shannon
J&R Smith Construction, Inc.
Matt Smith
South Dakota Furniture Mart
Spearfish Butcher Shop
Spearfish Canyon Country Club
Spearfish Creek Wine Bar
Speed by Design
Angie Stewart
Irving Stone and Lisa Tate
Stone Cold Music
Sue and Ronald Struck
Howard and Janet Stubbins
Taylor Cycles LLC
Debbie Tellinghuisen
The Lodge at Deadwood
Ross Theisen
Chris and Stephanie Thill
John and Deb Trutnau
TSM MotorSports LLC
Anthony Valenzuela
Ann Van Stedum
Vern Eide Motorplex
Jennifer Voelker
Marlene Wait
Rick Ward
Steve and Angela Watkins
Curly and Lisa Waugaman
Willy Webb
West Prairie Lutheran Church
Don and Linda Westberg
White's Canyon Ford
Whites Queen City Motors
Beth and Greg Wilcox
Gary Wiles
Nick Wolf
Sydney Zapf
Bob Zeolla and Andrea Labara

2024 CASH DONORS

GIFTS IN MEMORY AND HONOR

Gifts in Memory
January 1 through
December 31, 2024

Tribute(s) for Vincent S. Ahlers
Karen Munk

Tribute(s) for Denny Ahrendt
Jim and Marla Symes

Tribute(s) for Joanie Anderson
Christine and Mark Osthus

Tribute(s) for Lois Anderson
Kathy and Durwood Clauson

Tribute(s) for Jim Andresen
Ron and Judi Person

Tribute(s) for Lyle Antrim
Lee and Carolyn Boyer

Tribute(s) for Nicole Backhaus
Joann Carlson
Shalom Christian Reformed Church

Tribute(s) for James Becking
Ardys Becking

Tribute(s) for Craig L. Betz
Cecily Betz

Tribute(s) for Diane, Barbara, & Maureen Birnie
Jeryllyn R. Birnie

Tribute(s) for Sue Boland
Dr. Dennis and Joan Clarke

Tribute(s) for Deborah Bolger
Larry and Mary Canfield
Sheila and Jerome Eckrich
Don and Judy Gohl
Patricia Haugom
Melinda La Framboise
Michael Roche
Gary and Grace Thimsen
Jamie and Penny Volin
Ann Wilson

Tribute(s) for Tim Bosch
Neil and Dinese Acker
Rich and Diane Andresen
Ed and Deb Bornitz
Michael and Mary Brzica
Kim and James Burma
Laura Cummings
Tom DeVaney
Mary Dunlap
Vicki Farrens
William Fuller
Dave and Lauraine Grevlos
Brian and Renee Grogan
Scott and Lynda Hoffman
Thelma Hueners
Mike and Cindy Huether
Richard Hurley

Greg Jasmer
Jerry's Country Estate
Campground
Chad Liesinger
Tony McNearGillette
Julie Merry
Thomas H. Olson, M.D.
Roxie and William Phillips
Barb and Frank Rance
Rodney and Cathy Rehfeldt
Cathy Reichelt
Steven and Denise Richter
Daniel Roach
Margaret Robertson
Nettie Sawatzky
Butch and Kathy Scharf
Jerry Schrier
Jon and Amy Sweetter
TabaPay
Mary and RJ Thompson
Pete and Peggy Thompson
Kim and Jerry Wagley
Lori Wood and Terry Olson
Patrick Wood

Tribute(s) for Judith Bowen
Craig Ekeland
Mark and Rebecca Ekeland

Tribute(s) for Peggy Boyer Thiele
Lee and Carolyn Boyer

Tribute(s) for Rick Breit
Deana Barth
Peter and Josephine Holland
Keith and Audrey Reid
Beth and Greg Wilcox

Tribute(s) for Collette Broveleit
Paula Jensen

Tribute(s) for Karlie Bruining
Julie Gehm

Tribute(s) for Sylvia Bruns
Marlene and Ruben Hofer

Tribute(s) for Silver Brunson
Julie Gehm

Tribute(s) for Adam Burris
Joyce Jacobs

Tribute(s) for Monique Carlson
Jim Carlson

Tribute(s) for Robert M. Carlson
Ron and Judi Person

Tribute(s) for Alice Chapin
Marie and Dewey Chapin

Tribute(s) for Denise Christensen
David M. Christensen

Tribute(s) for Bill Conn
Dr. Dennis and Joan Clarke

Tribute(s) for Frederick Dawley
Anonymous
Scott and Raquel Blount
Richard Bonander and Tamara Ford
Bruce and Dinal Carlson
Kendra Childress
Vince Hanson
Lloyd Companies
May & Johnson, P.C.
Richard Moe
Tracy and Dale Morrill
John and Jolene Murren
Mary Niedringhaus
Ordell and Joyce Rovang
Shari Sunne
Robert and Dayleen Swanson
John and Linda Swanson
Ziulkowski
Steven and Coralette Thompson

Tribute(s) for Jayne Dean
Pat Erpenbach

Tribute(s) for Deceased Members
Johnson Peterson Unit 179

Tribute(s) for Jessica Dykstra
Scott and Denise Peterson

Tribute(s) for Edward Eikmeier
Gloria and Kenneth Reed

Tribute(s) for Craig Ekeland
Brenda Bainbridge
Tyler and Callie Beisch
Christopher Chitambar
Paul and Jean Colon
Dahlquist Living Trust
Sherry and Vance Goldammer
Mark and Nancy Hallenbeck
Barb Halstenson
Denis and Susan Hofflander
Michael and Cheryl Houk
Raymond and Martha Johnson
Richard and Donna Kiley
Twyla Knutson
Susan Lee
Donald and Judy Leslie
Dave and Linda Munson
Jamie Nieuwsma
James and Carol Oakland
Dr. Michael and Deborah Olson
Barbara Peterson
Judy and Roger Rae
Mary Ryrholm
Todd and Maggie Schmidt
Nancy Straw
Connie Tucker
Kristi and Bruce Wallin
Jim and Karri Wiederrich

Tribute(s) for Ann Forster
Anonymous
Judy Gohl
Judy Hanson
Carla Kane
Robert and Dawn Pearson
Maurine and James Pederson
Lee and Julie Person

Tribute(s) for Jerry Fowlds
Phyllis Schievelbein

Tribute(s) for Shari Fowlds
Phyllis Schievelbein

Tribute(s) for Alta Gaarder
Dr. Dennis and Joan Clarke

Tribute(s) for Sherma Gacke
Julie Gehm
Jocy and Joe Smith
Jessica and Todd Wells
Beth and Greg Wilcox

Tribute(s) for Ivy May Gall
Elloween Boyles
Linda and Jon Dietrich
Mary Alice Halverson
Barry and Janice Hermann
Delores Kafka
Merle and Virginia Larson
Mary and Ronald Pesek
Martha and Hershel Wickett

Tribute(s) for Evelyn Gehm
Julie Gehm
Jessica and Todd Wells
Beth and Greg Wilcox

Tribute(s) for John Gehm
Julie Gehm

Tribute(s) for Don Gohl
Beth and Greg Wilcox

Tribute(s) for Gayle Hanson
Ron and Judi Person

Tribute(s) for Paula M. Herrmann
Shirley F. Gortmaker
Beth and Greg Wilcox

Tribute(s) for Charlotte Heyl
Beth and Greg Wilcox

Tribute(s) for Samuel Horstmeyer
Mary Kay and Bill Garry
Julie Gehm
Erin and Jeff Horstmeyer
Joyce and Larry Horstmeyer

Tribute(s) for Evelyn Huenink
Lee and Carolyn Boyer

Tribute(s) for James Hymans
Gerald L. Klein
Tom and Kaye Reecy

Tribute(s) for Maizie L. Ihnen
Jocy and Joe Smith
Beth and Greg Wilcox

Tribute(s) for Sherry Johnson
Judith and Ronald Person

Tribute(s) for Daniel Kemnitz
Dr. Dennis and Joan Clarke

Tribute(s) for Blake Kruger
Julie Gehm
Kathy and Wayne Hammond

Tribute(s) for Sara J. Lappegard
Diane Wells

Tribute(s) for Karen Lawrence
Gloria and Kenneth Reed

Tribute(s) for Elery Lewis
Allan Saugstad and Janine Scott

Tribute(s) for Mardell Linge
Ron and Judi Person

Tribute(s) for David Malde
Craig Ekeland

Tribute(s) for Adelaide Mayer
Pat Erpenbach

Tribute(s) for Scott McGee
Julie Gehm
Jessica and Todd Wells
Beth and Greg Wilcox

Tribute(s) for Phylliss B. McQuillen
Anne M. Gormley

Tribute(s) for Donna McQuisten
Jim McQuisten

Tribute(s) for SueRilla Miller
Pat Erpenbach

Tribute(s) for Steve Mohr
Spencer Mohr

Tribute(s) for EB Morrison
Julie Gehm

Tribute(s) for James C. Mueller
Dennis and Sheila Larson

Tribute(s) for Drew Niedert
Beth and Greg Wilcox

Tribute(s) for Harold & Ruth Nysveen
Larry and Gabriele Nysveen

Tribute(s) for Roman & Donna Okroi
Grenville American Legion
Post

Tribute(s) for Marge Olawsky
Dr. Dennis and Joan Clarke

Tribute(s) for Fred Oleson
April and Mike Lewis

Tribute(s) for Kenneth Olinger
Julie Gehm
Jocy and Joe Smith
Jessica and Todd Wells
Beth and Greg Wilcox

Tribute(s) for Dee Owens
Judith and Ronald Person

Tribute(s) for Joycelyn Pietius
Dr. Dennis and Joan Clarke

Tribute(s) for Harlan Pietz
Marlene and Ruben Hofer

Tribute(s) for Henry and Lorna Poppen
Nan and Keith Venhuizen

Tribute(s) for Oscar Prasek
Gloria and Kenneth Reed

Tribute(s) for Iris Rasmussen
Ann Bailey
Kathy Bangasser
Lisa Bostic Miller
Robin Chandler
Julia Dvorak
Jan Fey
Sheila Frey
Julie Gehm
Joan HegerfeldBaker
Kading, Kunstle & Goodhope, LLP
Mary Jane and David Kalina
Jackie and Craig Knowlton
Cathy Krug
Chad Kulm
Venance Lengkeek
Sheri Longville
Anne and Donald McCarty
Kathy Mitzel
Eric and Lisa Rasmussen
Marie and Paul Rickert
Stephen and Jane Sahly
Marcia and Jeff Sveen
Jessica and Todd Wells
Beth and Greg Wilcox
Janet Wilcox
Dave Zimbeck

Tribute(s) for Marcella A. Rave
Bethany Berg
Brenda and Keith Bergum
Belinda Burgess
Paul Dykes
Einspahr Auto Plaza
Paula Geraets
Linda and Alan Ljunggren
Eric Mandell
Debra Muller
Clarence Rave
Rave Family Living Trust
Greg and Monica Stelzer

Tribute(s) for Jeff Reed
Gloria and Kenneth Reed

Tribute(s) for Robert Rempel
Lisa Behrens

Tribute(s) for Mavis Remund
Gloria and Kenneth Reed

Tribute(s) for Christopher & Tristin Rippentrop
Rose Stumpe

Tribute(s) for Diana Rogen
Gloria and Kenneth Reed

Tribute(s) for Larry Schelzi
Debbie Schelzi Family

Tribute(s) for Lois Schempp
Wayne and Sharon Akland

Tribute(s) for Janice Schepp
Beth and Greg Wilcox

Tribute(s) for Kim Schepp
Beth and Greg Wilcox

Tribute(s) for Lynn Shattuck
Anne Benson

Tribute(s) for Keith Skrondahl
Dr. Dennis and Joan Clarke

Tribute(s) for Lella Smith
Valerie and Richard Lietz
Beth and Greg Wilcox

Tribute(s) for Juliee Anne Stake
Catherine Dean
Mark and Patrice Mingo

Tribute(s) for Lynne Steele
Jackie and Craig Knowlton
Beth and Greg Wilcox

Tribute(s) for Jane Talley
Beth and Greg Wilcox

Tribute(s) for Cindy Thies
Diane and Gary Stensland

Tribute(s) for Wayne T. Thompson
Dr. Dennis and Joan Clarke

Tribute(s) for Norma Jean Timmons
David Timmons

Tribute(s) for Rita Topf
Judith and Ronald Person

Tribute(s) for Mike Tritz
Anonymous
Patty Bliss
Clarity Counseling LLC
John and Linda Dunleavy
Michael and Barbara Garlisi
Marlin and Denise Melander
Dawn Olds
Helen and Richard Paetow

Tribute(s) for Christian Tyler
Dr. Dennis and Joan Clarke

Tribute(s) for John Van Beest
Gloria and Kenneth Reed

Tribute(s) for Ronald Van Den Berg
Marlene and Ruben Hofer

Tribute(s) for Richard Van Noort
Lee and Carolyn Boyer

Tribute(s) for Goldie Varns
Timothy and Brenda Welbig

Tribute(s) for Thomas J. Vucurevich
John E. Brockelsby
John T. Vucurevich Foundation
Kitty Kinsman and Steve Zellmer
Nooney & Solay, LLP
Lloyd and Janet Sohl
Jessica and Todd Wells
Thomas and Sharon Zeller

Tribute(s) for Noah Wanamaker
Kathy and Doug Blomker
Julie Gehm
Jessica and Todd Wells
Beth and Greg Wilcox

Tribute(s) for Bob Watson
Beth and Greg Wilcox

Tribute(s) for Mary Lou Weiland
James and Nancy Weiland

Tribute(s) for Clark Wells
Judy Hagler

Tribute(s) for DoWesterbur
Gloria and Kenneth Reed

Tribute(s) for Cheryl J. Wheeler
Beth and Greg Wilcox

Tribute(s) for Dorcas Youel
Gloria and Kenneth Reed

Tribute(s) for Francis Young
David Rumbolz

Christian Green enjoyed the facepainting available at LifeScape's Homecoming in September.



2024 CASH DONORS/GROUPS

January 1, 2024 - December 31, 2024

Over 100 Groups Volunteered for LifeScape in 2024!

Gifts in Honor

January 1 through
December 31, 2024

Tribute(s) for Aubrey

Dave and Linda Munson

Tribute(s) for Piper

Blomker
Kathy and Doug Blomker

Tribute(s) for Greyson

Bonestroo
D & J Trucking

Tribute(s) for Abby

Brennan
Julie Gehm

Tribute(s) for Wendy

Clark
Dacotah Bank

Tribute(s) for April

Cundy
Robbie and Emily Cundy

Tribute(s) for Dominic

DeRouchey
David and Annette
DeRouchey

Tribute(s) for Micheal

Dunkle
Karl and Ruth Dunkle

Tribute(s) for Derek

Fugate
Angeline Anthony
Arnis and John Knutson

Tribute(s) for Adam

Geffre
Beckie Geffre

Tribute(s) for Zach Geier

Architecture, Inc.

Tribute(s) for Mike

Gosmire
Terry Gosmire

Tribute(s) for Dustin

Hoellein
Dacotah Bank

Tribute(s) for Riggins

Hoffbeck
Julie Gehm

Tribute(s) for Darrin

Johnson
Russell and Debra Johnson

Tribute(s) for Nan and

Pat Kelly
Anonymous (2)
Daniel and RoxAnn Aplan
Paul and Erika Batcheller
Robert and Jean Blackman
Brenda HansenMayer LLC
Kim and James Burma
Richard and Allison
Crawford
Amber and Jarrod Edelen
Pat and Roe Eidsness
Daniel Engebretson
Dr. Melissa Gibson and Dr.
Scott Gibson
Gregg and J.J. Gohl
Rick and Sonja Gourley
Brenda HansenMayer
Marjo and James Hietbrink
Amy and Stuart Horstead
Jennifer LabergeSorum and
James Sorum
Gene and Susan McGowan
Jennifer and Cy McMahon
Julie and David Mickelberg
Debra Muller
Richard and Rebecca Naser
Jeff and Trudiann Nelson
Nicole and Gregory
Osmundson
Mikaela and Mitchell Pruett
Steve and Sarah Sarbacker
Pat Schaefer
Karen and Greg Schultz
Shelly Simantel Horr
Jitendra Thakkar and
Shraddha Somaiya
Tyson and Camela Theeler
Lisa Viola
Stacy Weller
Jessica and Todd Wells
Dr. John C. Yu and Emilie Ng

Tribute(s) for Cru LeBrun

Julie Gehm

Tribute(s) for Grayson

LeBrun
Julie Gehm

Tribute(s) for Levi

LeBrun
Julie Gehm

Tribute(s) for Oakley

LeBrun
Julie Gehm

Tribute(s) for Donald

McCleerey
Michelle McCleerey

Tribute(s) for Roberta

Nesheim
Bobbie Graefe Nesheim and
Dale Nesheim

Tribute(s) for Anna

Olson
Elizabeth and Garry
Knussman

Tribute(s) for Jamie

Reindl
Carol Peach

Tribute(s) for Dana Sue

Saner
Scott and Denise Peterson
Geraldine and Jerroll Saner

Tribute(s) for Rogan

Schmidt
Julie Gehm

Tribute(s) for Jocelyn J.

Smith
Valerie and Richard Lietz
Katy Schultz

Tribute(s) for Olivia

Storley
Anonymous

Tribute(s) for Gerry

Tracy
Bonnie and David Omdahl

Tribute(s) for Peyton

Tuttle
Jeff and Susan Sylliaasen

Tribute(s) for Heidi Valer

James and Barb Valer

Tribute(s) for Kat

Zimmerman
Ken and Pam Stubberud

1776 Riders Motorcycle
Club
All City Elementary, Kids
Care Program
ARISE Church
ARISE Church Youth Team
Atoley Salon & Spa
Augustana University
School of Music
Augustana University
School; Communication
Disorders Program
Augustana University
School; NSSLHA Group
Avera McKennan Hospital
& University Center
BACA; Bikers Against
Child Abuse Motorcycle
Organization
Banditos MC
Ben Riefel Middle School
Beta Sigma Phi
Black Hills Cornhole
Association
Booth- Cotton Family
Boy Scout Troop #48
Caliber
Citi
Country Maid
Dakota Auto Parts
Dakota Horizon Girl
Scouts
Delaware Reformed
Church, Lennox
El Riad Shrine Clowns
Embrace Church- Here I
Am Leadership Group
Eugene Field A+

Elementary Student
Council
First Bank & Trust
First Christian Reformed
Church, SERVE Project
First Interstate Bank
First PREMIER Bank
Fourteen Foods Dairy
Queen, Aberdeen
Fourteen Foods Dairy
Queen, Brandon
Fourteen Foods Dairy
Queen, Brookings
Fourteen Foods Dairy
Queen, Harrisburg
Fourteen Foods Dairy
Queen, Sioux Falls
Kiwanis Avenue
Lake Lorraine
Crossing Place
East 10th Street
Fourteen Foods Dairy
Queen, Tea
Fourteen Foods Dairy
Queen, Worthington
Fourteen Foods Dairy
Queen, Yankton
Ghost Bonnet MC
Girl Scout Troop #40058,
Brandon, SD
Girl Scout Troop #40060,
Harrisburg, SD
Girl Scout Troop #41467,
Sioux Falls, SD
Girl Scout Troop #41701,
Tea, SD
Good News Church

Good News Church Adult
Groups
Good Shepherd Lutheran
Church and School
Great Plains Watercolor
Society
Hamsters USA
HelpLine Center
HelpLine SALSA
Department
Holy Cross Church Youth
Group
Holy Spirit Church Youth
Howard Middle School
Students
HUB
ISG Engineering
Lands Lutheran Church
Last Stop CD Shop-
10th St
Last Stop CD Shop- 41st
LifeScape Ambassadors
LifeScape Foundation
Team
Lincoln High School
Linwood Church Middle
School Youth Boys Group
Mike's Bar, Sherman, SD
NAWIC; National
Association of Women in
Construction
Neighborhood Ride Group
Netherlands Reformed
Christian School, Corsica,
SD
Northwestern College, IA
O'Gorman High School
Oien Family Chiropractic

Papa Woody's Wood
Fired Pizza
PDR Hunt
POET
Prairie Hills Covenant
Church
PREMIER Bankcard,
Dispute Review
Department
PREMIER Bankcard,
Marketing Department
Ransom Church
Roosevelt High School
Rotary Club of Sioux Falls
West
Sanford Genetic Team
Sanford Health Plan
Sanford Health Plan,
Compliance Department
Sanford Health Plan,
Corporate Leadership
Team
Sanford Revenue Cycle
Senior Directors
SD Bureau of Human
Resources and
Administration
Sioux Falls Canaries
Sioux Falls Christian High
School Photography
Students
Sioux Falls Fire Rescue
Sioux Falls Fire Station #1
Sioux Falls Fire Station #3
South Dakota
Ghostbusters
South Dakota Symphony
Dakota String Quartet

South Dakota Symphony
Dakota Wind Quintet
Southeast Technical
College- Mechatronics
Department
Star Wars 621st Detention
Squad/501st Legion
Syverson Tile & Stone-
All Branches
Texas Roadhouse
The Bancorp
The Bowling Volunteer Group
The Crew MC
Toy Run Group
Tre Ministries
Trent River Camp
Tri-Valley High School
National Honors Society
Group
TUBA Christmas
Twisted Drifters MC
U.S. Bank, Sioux Falls Main
U.S. Veterans Motorcycle Club
University of South Dakota
Department of Physical
Therapy
USD Cultural Immersion
Program
USD Medical Student Group
USF Culture for Service Day
USF Women's Soccer Team
Vern Eide Motoplex
Vern Eide Motorcars
Wilmot, SD Sunshine Ladies
Young Life

Leave a Legacy

Imagine leaving a legacy that will help provide lives of dignity and fulfillment for countless people with disabilities. Through your estate planning, you can make a difference far into the future, while providing tax advantages now for yourself and your family. As you review or write your will, consider including a charitable bequest for the LifeScape Foundation. The assets you provide will be carefully invested, and only the interest is used. In this way, your gift will continue to provide for individuals with special needs indefinitely. Your attorney can advise you on the language to use. It is commonly worded as below:

I give, devise, or bequeath to the LifeScape Foundation, a South Dakota corporation, for its real purposes, all (or a fraction) of the rest, residue, or remainder of my estate whether real or personal.

For more information on how you can help those supported by LifeScape—even beyond your lifetime—please call the Foundation office at **(605) 444-9800**.

Ways to Give

- **Grain Donation** – Donating grain to LifeScape offers several financial benefits over gifts of cash, while helping support children and adults with disabilities. Work with your local elevator to facilitate your donation.
- **Sustainer Club!** – Set up a convenient monthly gift of \$15 or more, which can even be automatically charged to your credit card or deducted from your checking account.
- **Matching Gifts** – Check with your employer to see if they will match charitable contributions or volunteer hours made by their employees.
- **Airline Miles** – Donate your frequent flyer miles to provide transportation to children and adults in need.
- **Join our email list** – and help us save paper and postage. Send your email address to giving@LifeScapeSD.org
- **Tribute Gifts** – Tribute giving is a way to recognize, honor, and celebrate people that are important to you while giving back to LifeScape.

These are just a few of the many ways you can give to support LifeScape!
To learn more, contact the LifeScape Foundation at 605-444-9800
or giving@lifescapesd.org. Or, visit www.lifescapesd.org/foundation.

LEGACY CIRCLE MEMBERS

January 1, 2024- December 31, 2024

The LifeScape Legacy Circle Recognizes Planned Giving Donors and Legacy-of-Life Estate Gifts that have built our Foundation.

2024 Legacy Members

Douglas Algra* Joseph C. Alvestad* Alice M. Anderson* Harriet Anderson* Robert and Linda Anderson Rudolph A. Anderson* Millicent* and Merle* Atkins Lawrence* and Alice* Axemaker Viola* and Donald* Babcock Floyd Baker* Mary Banbury Ruth Anna Elisa Barnes* Carol Bedsaul* David Beehler* Eva Bennis* Albert and Pauline* Benoit Ellen E. Benson* Florence P. Benson* Rudolph Benson* Henry* and Twilla Bents May E. Bergsma* Douglas and Lana Berkland Agnes F. Berther* Cecily Betz and Robert Nini Claire* and Mary* Bierschbach Don and Leona Bierschbach Dave and Christine Billion Dr. Jack* and Deb Billion Jerilyn R. Birnie Susy and Dr. Jerry Blake Kathy and Doug Blomker Anne M. Bluhm* Larry Bohn Laurie Bolluyt Brian and Kaija Bonde Nina H. Boschker* Agnes Bowman* Melvin Brakke* Dina Brandt Clarence Brehm Esther Brewe* Beverly Brink* Craig L. Brown* R.C. Brunner*	Josephine Bruyer* Delores Buchholz* Margaret A. Buck* John and Arlene* Buittner Charles II* and Mary* Burke Vernon L. Burns* Luella Burroughs* Beverly* and Darrell Butterwick Catherine A. Campbell* Henry* and Eleanor Carlson Dale Christensen* David and Denise* Christensen Lauren and LaDonna* Christensen Merlyn and Janet Christensen Dempster Christenson* Clinton* and Jennie* Clark Dr. Dennis and Joan Clarke Florence Clifton* Fred Clifton* Richard and DeAnn Corcoran Harriet Cosgrove* Hollis* and Lois* Cotten Patricia and Richard Culbert Pearl* and Ray* De Kramer Walter* and Alice* Demke Richard A. Devereaux Majorie Dickason* Janet Dickson* John Diegel* Lois R. Dixon* Bob and Margaret Doeschner Eve Dooyema* Deloris Dow* Harold Dykstra* Thelma Eble* Waneta Edmison* Clifford O. Eidsness* Isadore D. Eirinberg* Opal I. Emley* Lee* and Betty* Engen Allyce Espeland* Steve* and Katherine* Everist Tom and Barb Everist Jessie Ewaldsen* Andrew J. Fischer* Deb Fischer Clemens	Irene Fisher Coon* Leo P. Flynn* Doris Fontenelle* Rev. Tim and Melissa Fountain Coe* and Dorothy* Frankhauser Herman*Bob* Freese* Charles* and Sheila* Gaeckle Alma L. Gannon* Rich and Mary Garry Adeline Gassen* Lenora Gehring* Glenda Gelston* Dr. Robert* and Mary Giebink Lyle Gillett* John and JoLynn* Goeman Ella Goossen* Arlene* and John* Grassel Nellie Greening* Ruth Grenz* Lee* and Marilyn* Gulberg Susella Gullion* Tyler and Michelle Haahr Beverly* and Wesley* Halbritter Ray Hammer* JaNice Hanson* Leona Hanson* Robert* and Ann Hanson Gilbert H. Hartle* Arlen "Arnie" L. Hauge Orlan Hayward* Tami and Jeff Hayzlett Elmer A. Heiserman* Martha Hemeyer* Ernest F. Hendricks* Sylvia Henkin* Martha E. Hilgemann* Edna M. Hilker* John Loren Hofeldt* Judy Marie Hofer* Caroline A. Holdridge* Fannie H. Hoogestraat* Wilbur* and Elizzabeth* Hopf Dody and Boyd Hopkins Charles* and Edna* Horton Erma House*	Howard* and Eunice* Hovland Tom and Melissa Howes Kurt* and Adina* Huber Louis* and Dorothy* Hurwitz Randy and Lynn Isakson Evangeline R. Iwan* Emil R. Jacobson* Bill* and Emma* Jensen John R. Honken* Leland* and Bev* Johnson Dennis and Beth Johnson Genevieve M. Johnson Julie Johnson and Bryan Hisel Mike Johnson Signie A. Johnson* Edgar* and Margaret* Jones Rose Jortlund* Phyllis and Donald* Joyce Howard* and Althea Louise* Kelley Nellie King* Katherine Kinsman and Steve Zellmer Dan and Arlene Kirby Joe and Jennifer Kirby Kevin and Peggy Kirby Jerry and Judi* Klein Gil* and Dorothy* Koepsell Ruth Kohn Muchow* Bernard G. Koplow* James* and Bernice* Kopperud George Koustrup* Ralph Kranz* Max Kuehn* Olga H. Kuhlmann* Elsie F. Kuper* Elsie Laisy* Jerry* and Nancy Lammers Vikki and David Lansing Dorothy Lehman* Beverly M. Leighton* Lori Lewison Evelyn Lien* Floyd Linhart* Zola F. Linn* Verna S. Lippert* Liz Lloyd	William* and Lida* Locke Beach Robert A. Locken* Imelda* and Fredrick* Loes Alan* and Diane Lohr Lorraine Fauth* Harold* and Juanita* Lucas Diane Ludgate-Love and Steven Love Dr. Thomas* and Ruth* Ludgate Arnold Lunden* Leona M. Lutgen* J.H.* and Edna* Mac Donald Clifford* and Ginny* Manderscheid Margarette W. Martin* Arlene* and Martin* Matthiesen Brian and Amy McEntee Helen McGuire* Jim and Donna* McQuisten Ruth E. Megard* Jennie Menninga* John* and Sharron Metli Edna Meyer* Ardath* and Benny* Mills Esther Miottel* Maxine Mitchell* Don* and Peggy* Modica Jeanine Moravec* John and Nancy Morgan Dr. EB* and Rosella* Morrison Tom and Debbie Motzko Dick* and Ruth* Muller A. R. Mullinix* Ronnie D. Murphy* Michael Murphy Joan Muth Duane M. Muxen* Clara E. Neal* Alma R. Nelson* Jeff and Trudiann Nelson Tom and Ruth* Neuberger Ruben Nevins* Henry Nikolaisen* Bruce and Leslie Norton	Bob and Cathy Novak Helen Noyes* Odean Nyhus* Charisse and Eivind Oland Judith B. Olsen* Lester Oppelt* Prudence K. Orton* Maud* and Martin* Osterhaus Mark and Christine Osthus Gladys Overland* Harry C. Panagos* Ray* and Marie* Paul Julia A. Pederson Philip E. Peirce* Dennis Peitz John J. Pendo* Fern Peterson* Florence Peterson* Mildred Peterson* Nathan Pfefferle* Dr. Merle R. Pflueger* Paul N. Pirtle* Henry A. Poppen* Oscar Pravecek* Marguerite S. Pugsley* Vesta Pursell* LeRoy O. Putnam* James A. Quien* Nina Raske* Ruth E. Reedy* M. Lisle* and Hepzi* Reese George Regynski* Lucille C. Reichert* Christopher Reistroffer Regina Rensch* Marilyn* and Rudolph* Reyelts Thelma F. Richards* Robert and Marie* Rickel Anne Rieck McFarland Merlin* and Beverly Riedel Larry Ritz* Thomas* and Ernestine* Roby June* and James* Rommen Esther Rothermel Anderson* Charlotte Salmon* Alpha Sandwich*	Helen C. Sathe* Charles D. Schamel* Allan and Mary Scharm Jeff and Kati Scherschligt Stanley Schlegel* Dorothy I. Schmidt* William J. Schoen Al C. Schoeneman Herbert Schoeneman* Alton Scholdt* Maeille Schull* Heidi A. Schultz Gary and Anne Schwartz E. E. Selom* Margaret Seten* David* and Jeannine* Shanard George Shanard* Tom Sharpee and Jeanne Anson Milton Sills* Brian and Betsy Sittig Clara Skailand* Olga M. Skailand* Andias F. Smith* Harold W. Smith* Thelma Smith* Dr. Lloyd and Jayne Solberg Norval* and Evelyn* Sorby Milton Sorenson* Linda* and David Stadheim Marion F. Staley* James O. Standley, Jr.* Adolph Staudenraus* Eleanor Steen* Jerome Steen* Zaro D. Stephenson* David Stevens Kathryn Stevens Kenneth Stoebner* Leon* and Oriska* Stroschein Rudolph C. Stverak* Marian P. Sullivan Mary Louise Sweeney* Mary Ann Templeton Deane and Connie Teut Kevin Thompson and Mary Lawrence-Thompson Arletta Tisher* James and Laura Tommeraasen	Elmer Tryon* Lore Tucker* Cheryl Turo* Justin* and Joyce Uhe Dr. Carl* and Charlotte* Van de Waa Bertie* and Dr. Rrobert* Van Demark Eileen Van Soest Alice Vanden Akker* Rosemary E. Vander Schaaf* Joe Vasek* Velma L. Vincent* Harry* and Lillian* Voelsch Jay Vogel Luella Vosburg* Claudia and Tom* Vucurevich Gerald Wagner* Mary Wagner* and Bob Illingsworth* Cindy Walsh* Anne Wangen* Eddie T. Wangen* Lillian V. Welff* Ethel Wengert* Frank West* Lillian L. Westlund* LaVaune Wetmore* Deloris G. Whitehead* Charles Wiedenman* Mary Caroline Williams Rudy* and Audrey* Winterfeld Frances Woods* Carolyn M. Wooten* Raymond G. Younkun* Mildred Ziegler* 11 Anonymous Members *Deceased Members
--	---	---	---	---	--	--	--

Many Thanks to Our Amazing 2024 Volunteers!

Autumn Aanenson Robin Abrego Nancy Adair Jill Adams Ian Albrecht Keelin Almonte Ayala Ashley Alvaranda Kim Amundson Tiffany Anderson Karen Anderson Janell Anderson Jensen Anderson Heaven Andrews Jeanne Anson Emma Anunson Lily Atsinger Kenzie Atwood Paige Auch Courtney Backer, MD Kendall Backora Brenda Bainbridge Jarad Bakker Treavanna Banuelos Patrick Barnett Douglas Barnett Danielle Barr Keldan Barr Liam Barr Janice Bartels Alivia Baumgart Jerry Baustian Ruth Ann Beaver Donna Beck Keara Beck Nancy Becker Rachel Becker Kaitlyn Berens Audrey Berg Doug Berkland Celine Bernard Ethan Beukelman Donna Bierle Amber Bigholtz Kristen Bittrich Ethan Blau Dale "Barney" Blauwet Lilly Bliven Mason Blue Steve Blumke Daniel Boadwine, MD Andy Boeke Gavin Boerger Chloe Boerger Ann Boerger Travis Boerger Caleb Boerger Andrea Boerigter Gus Boerigter Caden Boetschius Josiah Bohestroo Jan Bones Walt Bones Bregann Bones Harper Borchee Madeline Borgmeier Gerald Bouma Julia Bowman Chris Boyd Krista Bradjovich Jacobs Kyle Bratton Kynna Bratton Brandon Breitling Brian Bremer Kevin Bremer Addison Brenner Deb Brobjerg Brooke Kappeman	Makai Brooks Morgan Brouwer Nick Brown Parker Brown Jack Devanney Dan Devanney Angie Brown Jacob Browning Dillon Brummett Stephen Brunk Ryan Brunner Sara Brunner Sharon Bruns Jamuna Buchanan Brianna Bunde Elaine Burma Allison Burme Allison Burmeister Stephanie Busjahn Kelly Buss Tasha Buum Abrielle Buum Jeimy Cabrera Victoria Calderon Trellany Canady Deyssa Card Joann Carlson Dr. Angela Carlson Joel Carlson Douglas Carlson Sarah Carlson Julia Carlson Greg Carlson Rob Carmichael Melissa Carrier-Damon Oliver Carrier-Damon Felix Carrier-Damon Shelley Carroll Avila Casanova Blanca Chavarria Aydin Chet Connor Christensen Lauren Christensen Paul Christensen Dave Christensen Darcy Christenson Randy Christenson Larry Clark Wendy Clark Emeryson Cleveland Heaven Cleveland Nevaeh Cleveland Laurie Cole Brooke Cosand Alicia Cotton Cotton-Booth Family Charles Courtney Tonya Courtney Mabel Cox Bryan Cox Aderah Crater Marcy Crawford Ashley Crichton Rachel Crisp Paxton Crissey Linda Cundy Linné Curtis- Bayt, MD Abby Cutler Tracy Dahl-Webb Domenic Dalcourt Yeoman Dallan Tami Daly Aiden Danielson Stephen Danner Jacob Darr Sobios Debe Erica DeBoer Tisha DeGross Gavin Dehaven	Kathy DenOtter Greg DenOtter Danette DePaul Katie DeSaitel Jack Devanney Dan Devanney Brad DeVille Patsy DeVries Shirley DeVries Grace DiGiovanni Joel Dirnberger Rick DiSanto Ally Dolas Juliena Douma Grace Drietz Gaby Drought Natalie Dubel Jennifer Dubois Marly Duenas Emma Duerr McKenna Dukat Nate Duncan Kelsey Dyce Joel Dykstra Noelle Ebert Madelyn Ehler Jeannie Elisnger Clara Ellingson Katie Ellis Logan Ellison Brandon Englin Mary Jane Entwistle Robert Erhard Michele Erickson Natalie Erickson Megan Erickson Drake Erickson Felix Erickson Madelyn Erickson Lisa Esser Henry Evans Tom Everist Larry Feay Myra Feay Deanna Fehr Michael Feltes Madison Felty Jake Felty Dr. Lawrence Fenton Celeste Fergen Judy Fiegen Meaghan Fields Kendra Fikse Travis Finke Paulette Fischer Sheila Fisher Mara Fitzpatrick Jacque Fliss Peggy Foss Mary Fox Jerry Fox Anna Frangenberg Tori Franken Brayden Franks Kyndall Franzky Katie Lynn Friedbauer Kendra Frodermann Katie Frost Shelly Gaddis Kathleen Gaddis Hattie Galloway Allijah Garcia Connie Garcia Ivory Garcia Lucious Garcia Rhea Garcia Lucas Gardner Kathie Garner	Benjamin Geary Ashton Gebhard Julie Gehm Gerry Gengler Brianna George Gina George Andrew Geraets Gary Geraets Kathy Geraets Louis Geraets Mike Geraets Pat Geraets Connor Gibbs Traci Gilbertson Christen Gijuma Jackson Glanville Andrea Glynn Sierra Goodthee Tiahna Grady Nevaeh Grann Emily Griese Amanda Grimes Lauren Grinde Hadlie Groen Shannon Grosse Scott Grosse Sawyer Gruessing Seth Guidry Katy Gulbranson J. Tyler Haahr Karissa Haddican Layla Haddican Angela Haft Cheryl Hagena Dianne Hagena Jennifer Hagggar, MD Amanda Haider Kyle Halfpop Lela Hall Kathy Halvorsen Natalie Hamilton Kathy Hammond Nichole Hansen Halee Hansen Olivia Hanson LaVonne Hardy Jill Harms Olivia Hartlep Doug Hartman Hillary Hastings Ron Hatlewick Nadiene Hatlewick April Hatlewick Pam Hatt Nathan Hauch Greg Hauglind Abby Haun Luke Haverdink Marsha Heath Dawn Heib Jaden Heidt Katrina Height Bill Height Jaren Heil Lincoln Heil Avery Heilbolt Lauren Heine Mollie Heinen Katie Hendrickson Mike Hendrickson Brittany Hennings Jason Herrboldt Heather Hewitt Audrey Hewitt Lauren Hewitt Paul Hickman Rhonda Hickman Brooklyn Hieb	Alexis Hieb Mary Hiemark Gabriel Hight Ryan Hilgeman Jeff Hilgenberg Christopher Hill Riley Key Rick Kiley Doosook Kim Gloria Kindopp Dan Kirby Daniel Kitchens Bill Klein Butch Klein Connie Klein Dave Klein Dick Klein Don Klein Gayle Klein Jerry Klein JoEllen Klein Mike Klein Virg Klein Elizabeth Klokov Jerrica Knapp Nic Knapp Tucker Knapp Lydia Knobloch David Kocak Jackie Kocak Mary Koch Zach Koch Hudson Koelker Laura Koelker Noelle Koik John Koke Carol Kollis Danielle Konechne Taeden Konechne Tobias Konechne Sue Kooima Noelle Kook Andrea Kopp Tyler Kopp Lynne Koppinger Madelyn Kozoboom Dan Kramer Trisha Kreman Jason Krumvieda Bill Kubat Ryan Kuik Jonas Kulzer Dan Kuper Brady Kyte Ethan Kyte Jim Lacey Joann Lacey Elsa Johnson Julie A. Johnson, MD Samuel Johnson Dennis Jones JayCee Jones Karen Jones Phyllis Joyce Jill Joyce Hazzard Lennox Kane Corey Karmazin Karen Kaskie Nash Katar Natasha Kattenbach Jennifer Keating, MD Karen Keiser Joseph Kelly Kevin Kelly	Marlyce Kelly Nan Kelly Nick Kelly Camryn Kennedy Griffin Keogh Karen Kern Riley Key Dick Kiley Doosook Kim Gloria Kindopp Dan Kirby Daniel Kitchens Bill Klein Butch Klein Connie Klein Dave Klein Dick Klein Don Klein Gayle Klein Jerry Klein JoEllen Klein Mike Klein Virg Klein Elizabeth Klokov Jerrica Knapp Nic Knapp Tucker Knapp Lydia Knobloch David Kocak Jackie Kocak Mary Koch Zach Koch Hudson Koelker Laura Koelker Noelle Koik John Koke Carol Kollis Danielle Konechne Taeden Konechne Tobias Konechne Sue Kooima Noelle Kook Andrea Kopp Tyler Kopp Lynne Koppinger Madelyn Kozoboom Dan Kramer Trisha Kreman Jason Krumvieda Bill Kubat Ryan Kuik Jonas Kulzer Dan Kuper Brady Kyte Ethan Kyte Jim Lacey Joann Lacey Elsa Johnson Julie A. Johnson, MD Samuel Johnson Dennis Jones JayCee Jones Karen Jones Phyllis Joyce Jill Joyce Hazzard Lennox Kane Corey Karmazin Karen Kaskie Nash Katar Natasha Kattenbach Jennifer Keating, MD Karen Keiser Joseph Kelly Kevin Kelly	Matthew Leet Mikael Leet Tracey Leet Kristi Leisinger Anna Lewis April Lewis Halle Lewis Heidi Lewis Jessica Lewis-Coomies Johnny Lewis Justin Lietz Richard Lietz Yi-Chun Lin Karin Lindell James Lindstrom Tanya Liu Amy Livingston Becky Livingston Bob Livingston Stacy Lorensen Morgan Lorenzen Olivia Lott Dan Lowm Brittany Ludens Jeanelle Lust Sarah Madsen Alice Majeres Jack Majeres Tori Marco Lily Mark Jennie Marks Michelle Marks Caitlin Marsh Edna Martinez Belinda Martinson Grant Martinson Cindy Matson Lincoln Mattern Greg Mattern Terry Matthe Brian Maude Kirsten May Jeffery Mayfield Shelby McBride Jackson McCanlley Casey McCarty Jackson McCaulley Zach McConnell Alex McCurdy Max McDade Anne Marie McDade- Goraj Doug Mcdetzke Zoey Mcdetzke Andy McDougall Eli McFarland Phyllis McMartin Jessica McNamara Bob McNaney Alan Meier Adaya Meiners Bob Mergen Carol Mergen Cindy Mergen Barbara Merritt Al Mescher Larissa Messenbrink Angel Metzger Courtney Meyer Braxton Meyeraard Fevren Michael Layher Michele Reese Michele Lucile Middleton Isabella Miller Matthew Miller Mike Miller	Nicole Miller Remington Miller Audrey Miller-Brush Diane Mitchell Julia Mitchell Kevin Mitchell Masly Moch Magdalena Modzelewska Daniel Moockly Alexis Moellen Lisa Moeller Brian Morgan Lindsey Morris Jessica Moser Jess Moum Emily Muilenburg Aubrey Mulder Paul Munson Tapaswly Muppomeni Karyss Muyskens Alexa Nelson Brittany Nelson Jeff Nelson Kameron Nelson Laura Nelsen Lynne Nelson Megan Nelson Wyatt Nelson Bobbie Nesheim Elizabeth Ness Payge Nerick Kirsten Reurink Austin Reuter Vonnv Revell Joseph Reynen Teresa Reynolds Kacee Rhody Anne Rieck McFarland Greg Rieff Michelle Rietschel Tiffany Ripperda Alivia Ritter Gilbert Rivera AJ Robinson Katelyn Robinson Naomi Rock Tisha Rodgers Leigh Roelofs Becky Roelofs Brooklyn Roosenbom Dave Rozenboom Dan Roskup David Ross Lisa Ross Josten Rostowily Eleanor Roubideaux John Rozell Natalie Ruba William Rush Karen Rustt Avery Ryder Abigail Rysavy Haley Salberg Rokusek Samantha Ashlynn Sammons- McGraw Logan Sanborn Josiah Sandstrom Dianne Sarahan Cory Sarks Kadyn Schafersman Linda Schalekamp Ann Scheepstra Greg Scheepstra Cecelia Scherpin Coleen Schildhauer Bill Schildhauer	Coleen Schildhauer Harlan Schillinger Marli Schippers Amanda Schmidt Natalie Schmidt Barb Schmidt Mike Schmidt Terry Schmidt Carla Schmidt Ella Schmitz Fallon Schneiderman Graydon Schneiderman Janna Schneiderman Keaton Schneiderman Lawson Schneiderman Pippen Schneiderman Sandy Schoenbeck Jacob Schoolmeester Katie Schoon Nora Schouten Samantha Schreurs Kristin Schroeder Kai Schroeder Carter Schuckel Heidi Schultz Shelly Schwartz Tommy Schwartz Emily Schwarz Spencer Secrest Susan Segeleong Lilian Shari Stacey Sharpe Tom Sharpee Tracey Sherman Keira Sherman Alex Shuck Megan Shuck Kinna Shuck Crissey Sieber Terry Siems W. Tom Simmons Sue Simons Rahul Singh Natalya Sinkinder Annalise Sinning Michelle Sinning Allison Sjaarda Mica Skinner Angel Skippings Diann Smith Irie Smith Porter Snow Pam Soderholm Kimberly Sogn Barry Solomon Juvenal Soria Jay Soukup Kaden Spaans Rebecca Spaans Brian Stai Nick Stansbury Josie Stansbury Quentin Stanley Abby Stapleton Ellery Stark Trish Stark Christine Stephenson Anneka Sterte Jacob Stewart James Stewart Joe Stewart Josie Stewart Randy Stewart Marshall Stobbe Samantha Stobbe Jace Stolz Shaya Stolz	Sharon Story Elle Straatmeyer Ron Struck Sue Struck Noah Stude Mandy Sturderant Meredith Sundberg Sarah Sundet Owen Sundstrom Trish Swanhorst Devynn Swanson Jamie Swenson Joselyn Sybesma Dave Syverson Steve Syverson Fenera Taye James Tefft James Tefft Logan Tessa Emily Thies Sonja Theisen Judd Thielke Joseph Thielke Jericho Thielke Michael Thiry Johah Thum Roman Thum Abigail Tilberg Melissa Tille Alivia Tindall John Tomkins Nathan Tornow William Cedenno Torres Bassett Travis Billy Trosper Kim True Kadin Tuttle Maskhe Two Hawk James Ulstad Alexis Ung Vanessa Ung Shannon Urban Anna Vaaler Ted Van Alstyne Jennifer Van Berkum Summer Van Der Vliet Amelia Van Essen Cooper Van Essen Jennifer Van Essen Troy Van Essen Shayles Van Gelder Amber Van Heerde Rhonda Van Kekerix Ann Van Stekum Angela Van Veldhuizen Tyler Van Voorst Doug VanBeek Matthew VanBeek Ryan Vanden Bosch Asher Vander Leest Haley Vander Pol Tyler VanderLinden Brad VankalsBeek Madaly VanKeulen Eileen VanSoest Sophia VantHul Allie VanTilburg Connor Verky Ali Vincent Acasia Visser Jiri Vittitoe Jodi Vittitoe Abby Vlastuin Lee Vlaminck Emily Vo Dwight Vogel Harvey Vogel Patty Vogel	Candice Wagner James Wallace, MD Andrea Waller Kristin Walstra Brandon Walts Nick Wanna Liam Wanna Teresa Ward Alexandra Warejcka Sheila Wassom Steve Watkins Wayne Watkin Chenise Weber Tim Weber Alexis Weinacht Hannah Welch Rylie Weldon Ariahna Wells Jessica Wells Alaina Wescot Amanda Westendorf Jerry Westra Jo Westra Diane Wheeler Ivy White Bob Whitmore Rydell Wickersham Megan Wiesner Beth Wilcox Greg Wilcox Kory Wilcox Chris Williams William Williams Adam Willoughby Kyle Wilmarth Rebecca Wimmer Gary Wingler Austin Wingler Noah Winter Bailey Wintersteen Taylor Wit Ashlyn Wobig Georgia Woble Roger Wolles David Wolles Tim Wolles Amy Wolllman Daniel Wonenberg Natalie Woodrich Deb Workman Erica Wubben Cheran Wynstra Daniel Wynstra Joseph Wynstra Marie Wynstra Nicole Wynstra Barb Xavier Bryce Xavier Leah Yerdon Deb Yoder Steve Young Syulee Zamudio Lexie Zamudio Moraima Zamudio Lisa Zens Jordan Zingler Lydia Zink Jerry Zwack Isaac Zwiers
--	---	---	--	---	--	--	--	---	---	--